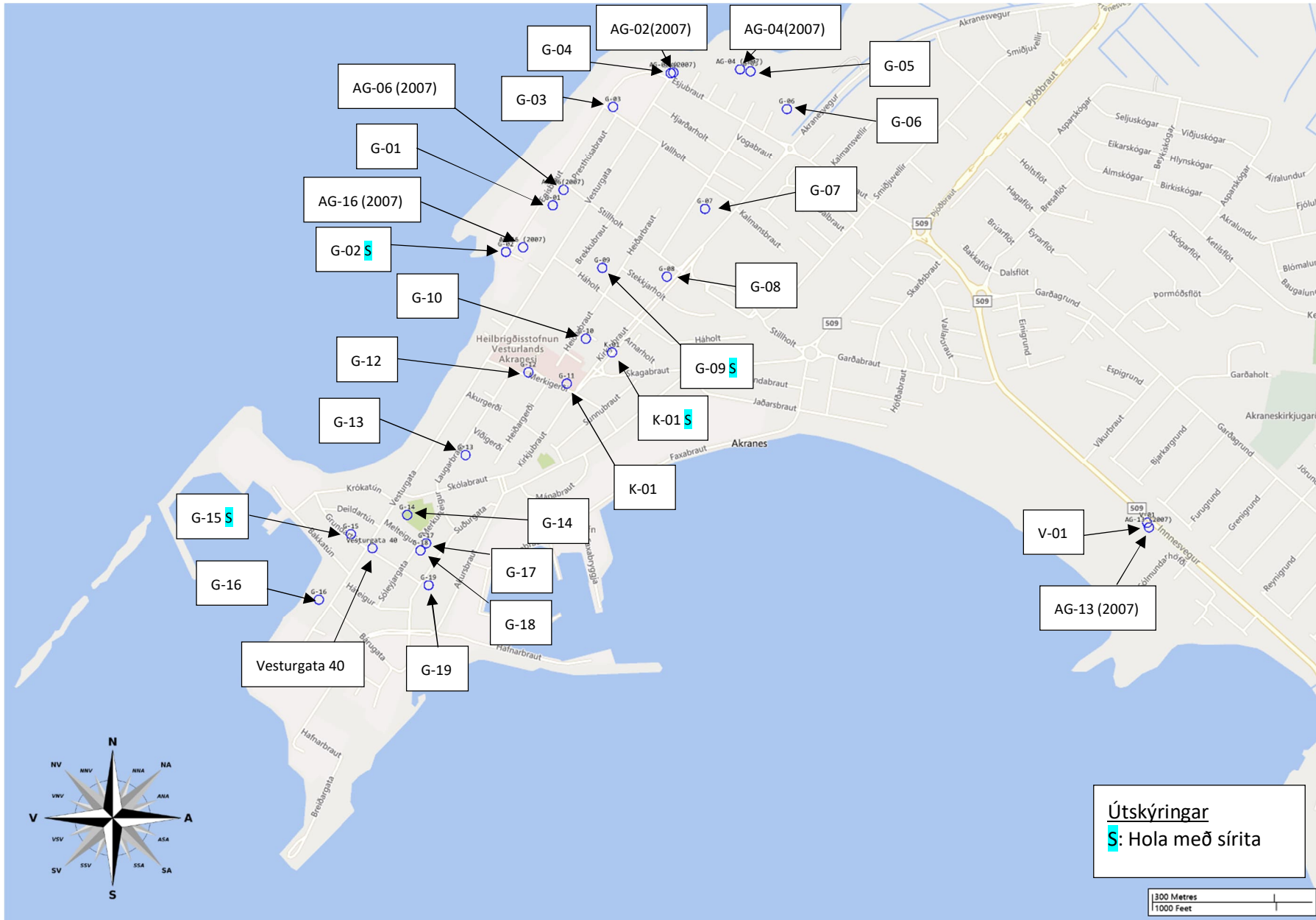


Viðauki A - Yfirlitskort



Grunnvatnshæðakort



Grunnvatnshæðakort



Viðauki B - Grunnvatnsmælingar

Gryfja	1.8.2023			2.8.2023			3.8.2023			4.8.2023			8.8.2023			9.8.2023			24.8.2023			29.8.2023			
	Dýpi á vatn	Hiti	Leiðni	Dýpi á vatn	Hiti	Leiðni	Dýpi á vatn	Hiti	Leiðni	Dýpi á vatn	Hiti	Leiðni	Dýpi á vatn	Hiti	Leiðni	Dýpi á vatn	Hiti	Leiðni	Dýpi á vatn	Hiti	Leiðni	Dýpi á vatn	Hiti	Leiðni	
	(m)	(°C)	(EC)	(m)	(°C)	(EC)	(m)	(°C)	(EC)	(m)	(°C)	(EC)	(m)	(°C)	(EC)	(m)	(°C)	(EC)	(m)	(°C)	(EC)	(m)	(°C)	(EC)	
G-01	2.3	7.7	512												1.9	8.6	380				1.9	8.9	425		
G-02	3.2	9.4	2442												2.8	9.5	3126	2.7	9.9	3105	Síriti				
G-03	2.8	8.7	347												2.5	8.7	553				2.4	8.7	770		
G-04	Þurr	-	-												3.1	9.2	507	3.1	11.2	534	3.0	9.1	530		
G-05	2.3	8.5	255												2.1	8.4	360				2.3	8.9	418		
G-06				2.3	10	207									2.2	8.2	270				2.1	8.1	337		
G-07				2.3	8	238									1.7	8.9	320				1.6	8.9	320		
G-08				Þurr	-	-									2.5	8.1	620				2.4	8.4	518		
G-09							2.4	7.7	509						2.8	8.5	565	1.9	8.2	604	Síriti				
G-10							1.9	-	-						Óaðgengileg			Óaðgengileg							
G-11							1.9	Skolp?							Grunur um skolp			Grunur um skolp							
G-12							Þurr								Þurr	-	-				Þurr niður á 2.4				
G-13										2.3	10.1	438			2.0	11.5	372	2.1	11.7	400	2.0	11.7	401		
G-14										2.3	9.5	330			2.3	10.1	370	Þurr	-	-	Þurr				
G-15										1.8	-	-			1.7	12.6	402	1.7	13.4	556	Síriti				
G-16													2	10	380	1.9	10.2	460			1.9	9.9	460		
G-17															Þurr						Þurr				
G-18															Þurr						Þurr				
G-19															Þurr						Þurr				
K-01				2.5	10.1	506									2.2	10.6	772	2.15	10.4	875	Síriti				
V-01															3.1	9.5	405	1.3	11.2	530			1.05	12.1	248
Vesturgata 40															2	11.4	390								
Vesturgata 81				1.6	10.1	540																			

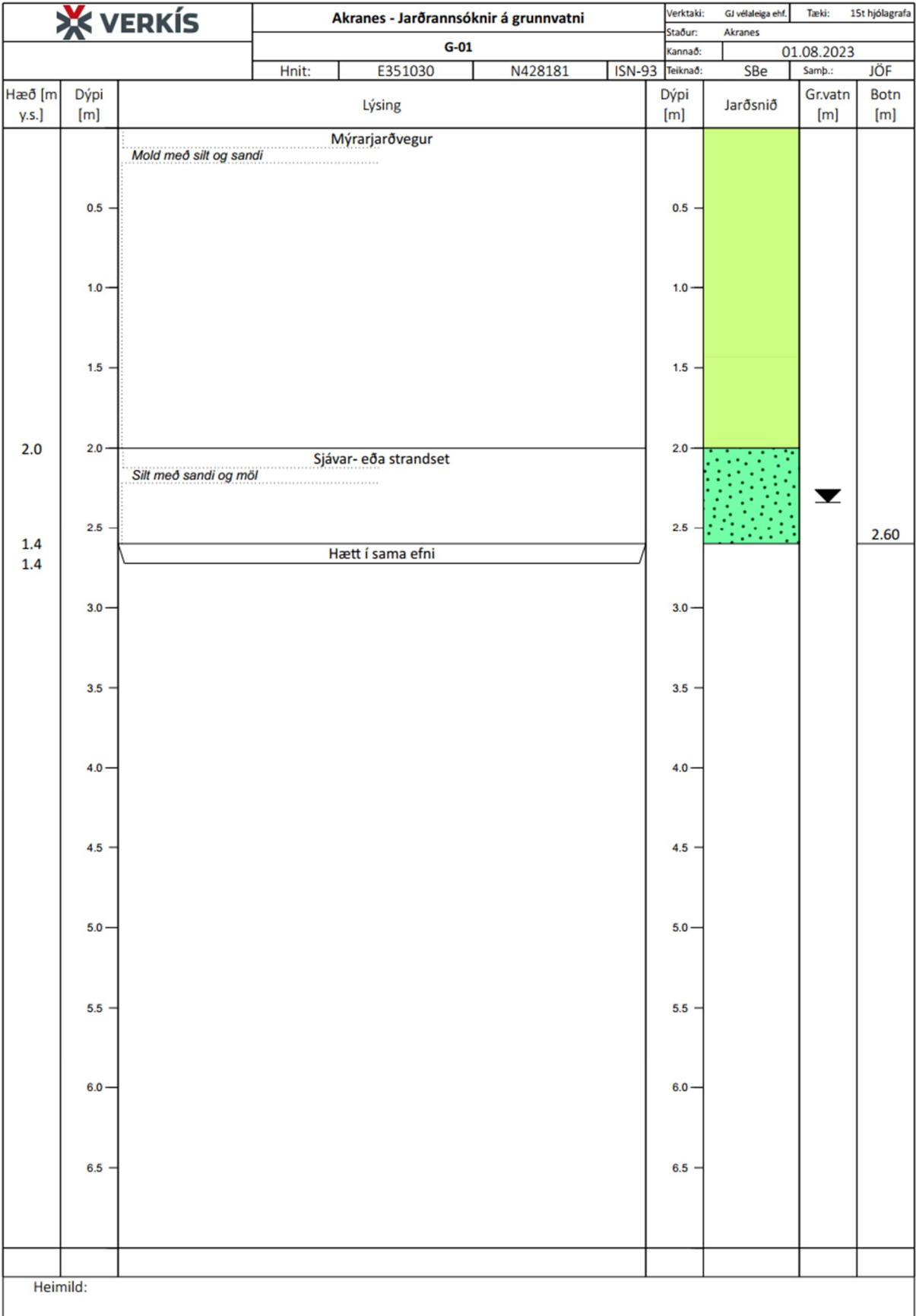
Heiti	Hæð drenrörs frá yfirborði	Z-hnit Landshæðarkerfi	Z-hnit Akraneshæðarkerfi	Grunnvatnshæð (m), samkvæmt Akraneshæðarkerfi			
	(m)	(m)	(m)	Við gröft	9.8.2023	24.8.2023	29.8.2023
G-01	0.1	4.0	4.1	1.8	2.2		2.2
G-02	0.6	4.4	4.6	1.4	1.8	1.9	Síriti
G-03	0.2	4.4	4.5	1.7	2.0		2.2
G-04	1.05	4.7	4.8	Þurr	1.8	1.8	1.9
G-05	0.25	6.2	6.4	4.1	4.3		4.0
G-06	0.4	6.6	6.8	4.5	4.6		4.7
G-07	0.7	9.8	10.0	7.7	8.3		8.4
G-08	0.2	11.4	11.5	Þurr	9.0		9.2
G-09	0	8.8	9.0	6.6	6.2	7.1	Síriti
G-10	0	12.6	12.8	10.9	10.9		Óaðgengileg
G-11	0	12.3	12.5	10.6	Skolpmengun?		Skolpmengun?
G-12	0	10.2	10.4	Þurr	Þurr		Þurr
G-13	0	9.2	9.3	7.0	7.3	7.2	7.3
G-14	0	8.2	8.4	6.1	6.1		Þurr
G-15	0.3	6.9	7.0	5.2	5.3	5.3	Síriti
G-16	0.8	5.8	5.9	3.9	4.0		4.0
G-17	0.25	9.9	10.0	Þurr	Þurr		Þurr
G-18	0.2	9.1	9.3	Þurr	Þurr		Þurr
G-19	0.1	9.7	9.8	Þurr	Þurr		Þurr
K-01	0.15	12.8	13.0	10.5	10.8	10.8	Síriti
V-01	0	9.0	9.1	6.0	7.8		8.1
Vesturgata 40	Opin gryfja - Ekkert rör		7.9	8.1	-	6.1	
Vesturgata 81	Opin gryfja - Ekkert rör		6.1	-	-	4.5	

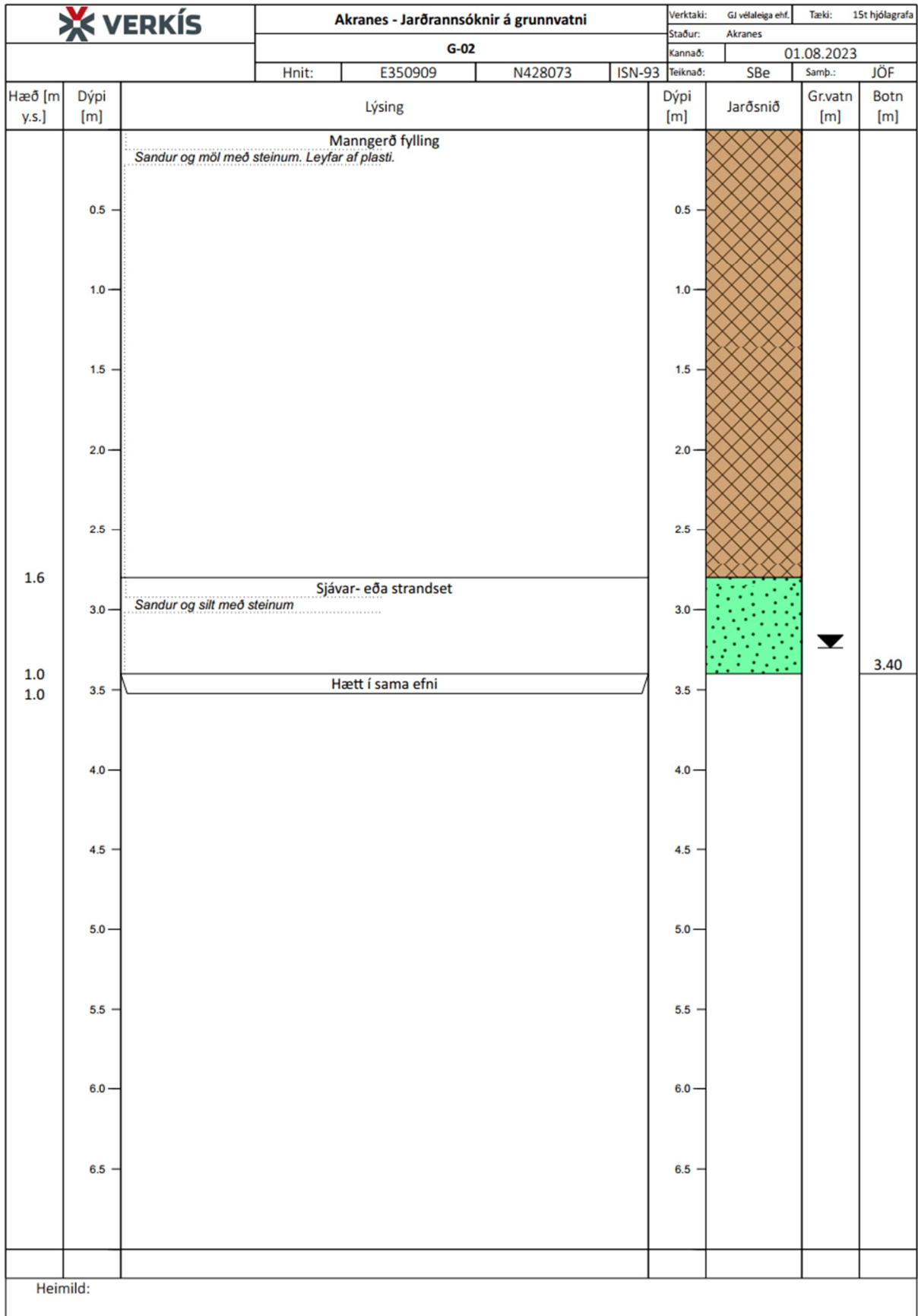
Viðauki C - Gryfjulýsingar 2023

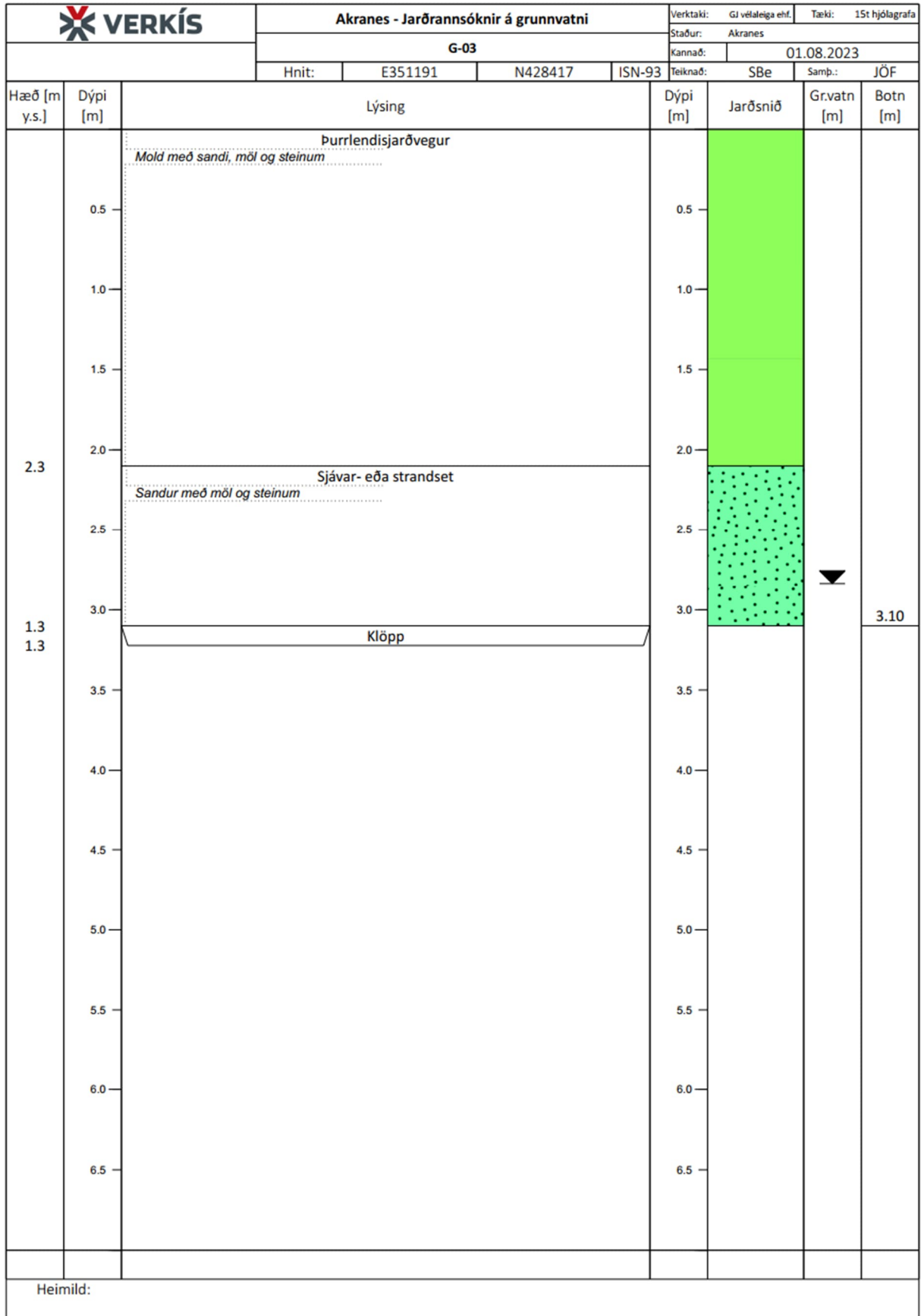
Hæð í gryfjulýsingum er gefin upp í Landshæðarkerfinu.

Grunnvatnsnhæð í gryfjulýsingum er skráð þar sem það kemur inn í gryfjuna þann daginn sem hún er grafinn.

Gryfja	ISN93		Landshæðarkerfi	Athugasemdir
	X-hnit (m)	Y-hnit (m)	Z-hnit (m)	
G-01	351030.5	428181.3	4.0	
G-02	350909.1	428072.8	4.4	Há leiðni
G-03	351191.1	428417.0	4.4	
G-04	351337.4	428492.9	4.7	
G-05	351534.6	428487.8	6.2	
G-06	351620.0	428391.0	6.6	
G-07	351405.7	428154.4	9.8	
G-08	351303.6	427992.8	11.4	
G-09	351145.2	428022.0	8.8	
G-10	351096.0	427848.6	12.6	Vottur af olíulykt
G-11	351043.6	427740.8	12.3	Sterk skolplykt, mælitæki ekki sett í vatnið
G-12	350950.3	427773.2	10.2	
G-13	350785.0	427577.9	9.2	
G-14	350633.8	427435.7	8.2	
G-15	350492.3	427395.4	6.9	
G-16	350405.4	427237.7	5.8	
G-17	350677.1	427363.6	9.9	
G-18	350662.1	427346.7	9.1	Aukahola. Grafið var niður á u.þ.b. 3 m en þá féll gryfjan saman og greftri hætt.
G-19	350678.1	427260.1	9.7	
V-01	352460.2	427327.7	9.0	
K-01	351158.9	427811.8	12.8	Aukahola. Stöku loftbólur koma upp í vatninu.







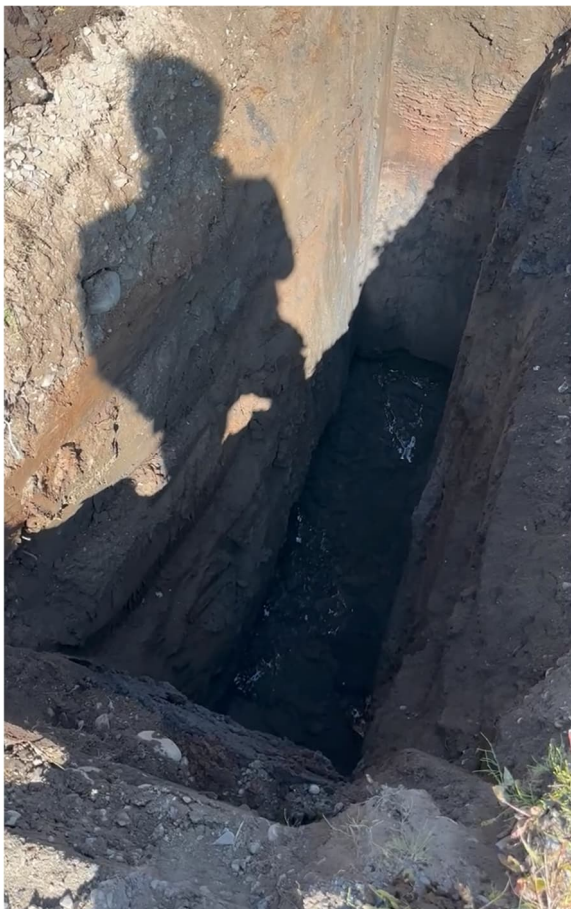
VERKÍS		Akranes - Jarðrannsóknir á grunnvatni				Verktaki: GJ vétaleiga ehf.	Tæki: 15t hjólagrafa		
		G-04				Staður: Akranes			
						Kannað: 01.08.2023			
		Hnit:	E351337	N428493	ISN-93	Teiknað: SBe	Samþ.: JÖF		
Hæð [m y.s.]	Dýpi [m]	Lýsing				Dýpi [m]	Jarðsnið	Gr.vatn [m]	Botn [m]
3.3	0.5	Þurrlendisjarðvegur				0.5	[Green fill]		
	1.0	<i>Mold með sandi, mól og steinum</i>							
1.7	1.5	Sjávar- eða strandset				1.5	[Green dotted fill]		
	2.0	<i>Sandur og mól með steinum</i>							
	2.5								
	3.0								
1.7	3.0	Klökk				3.0			3.00
	3.5					3.5			
	4.0					4.0			
	4.5					4.5			
	5.0					5.0			
	5.5					5.5			
	6.0					6.0			
	6.5					6.5			
Heimild:									



Mynd A- 1 Gryfja G-01



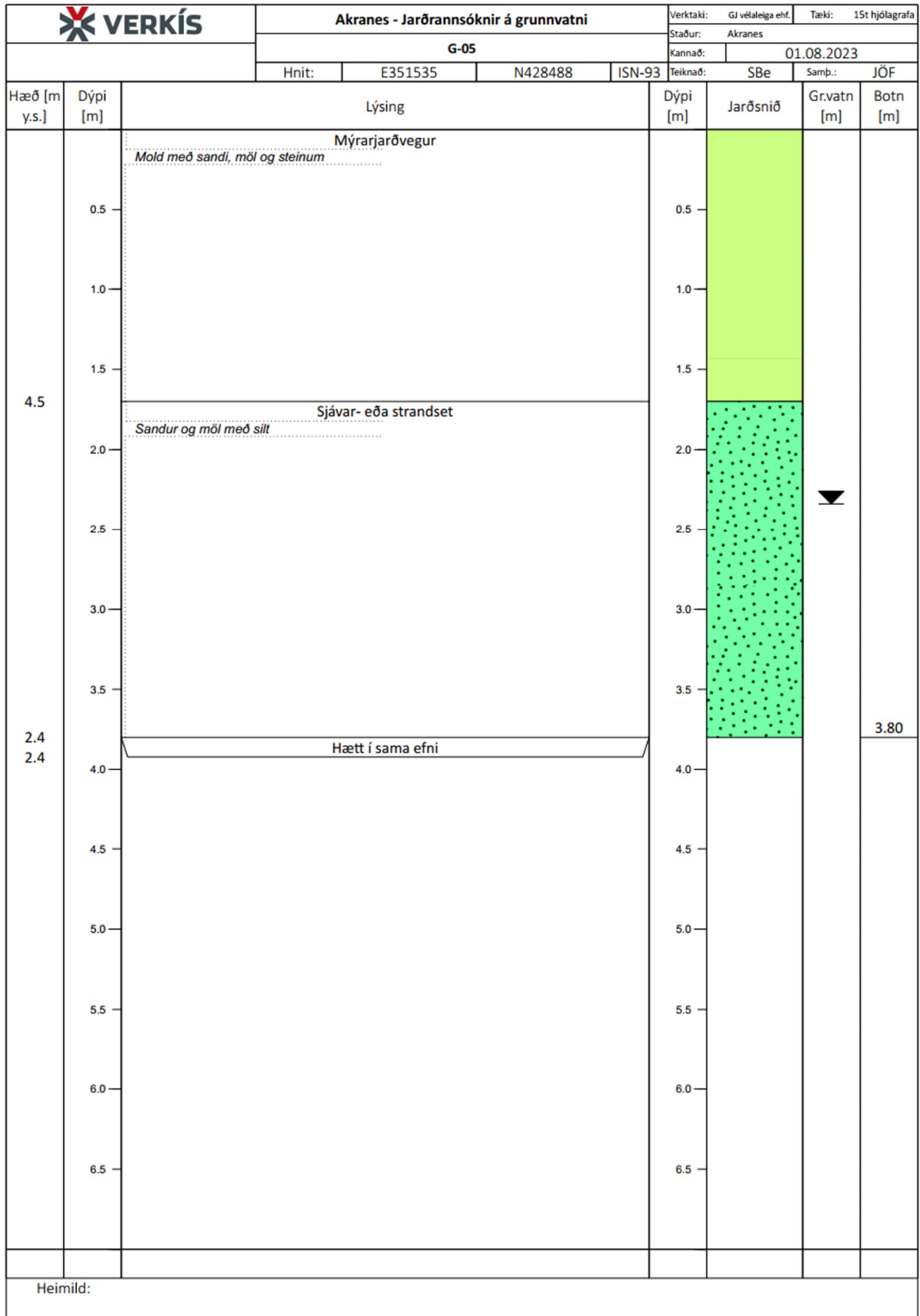
Mynd A- 2 Gryfja G-02



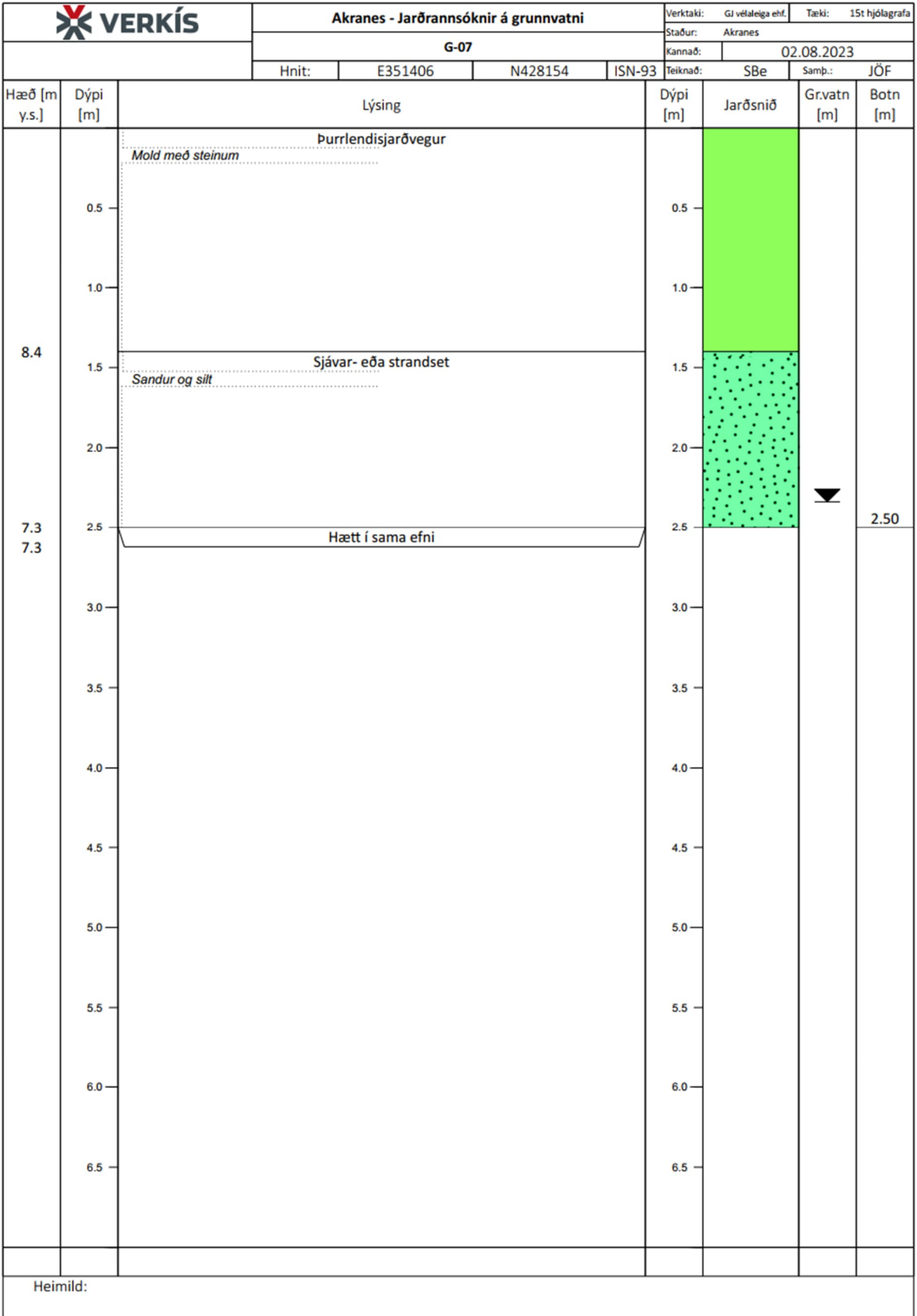
Mynd A- 3 Gryfja G-03

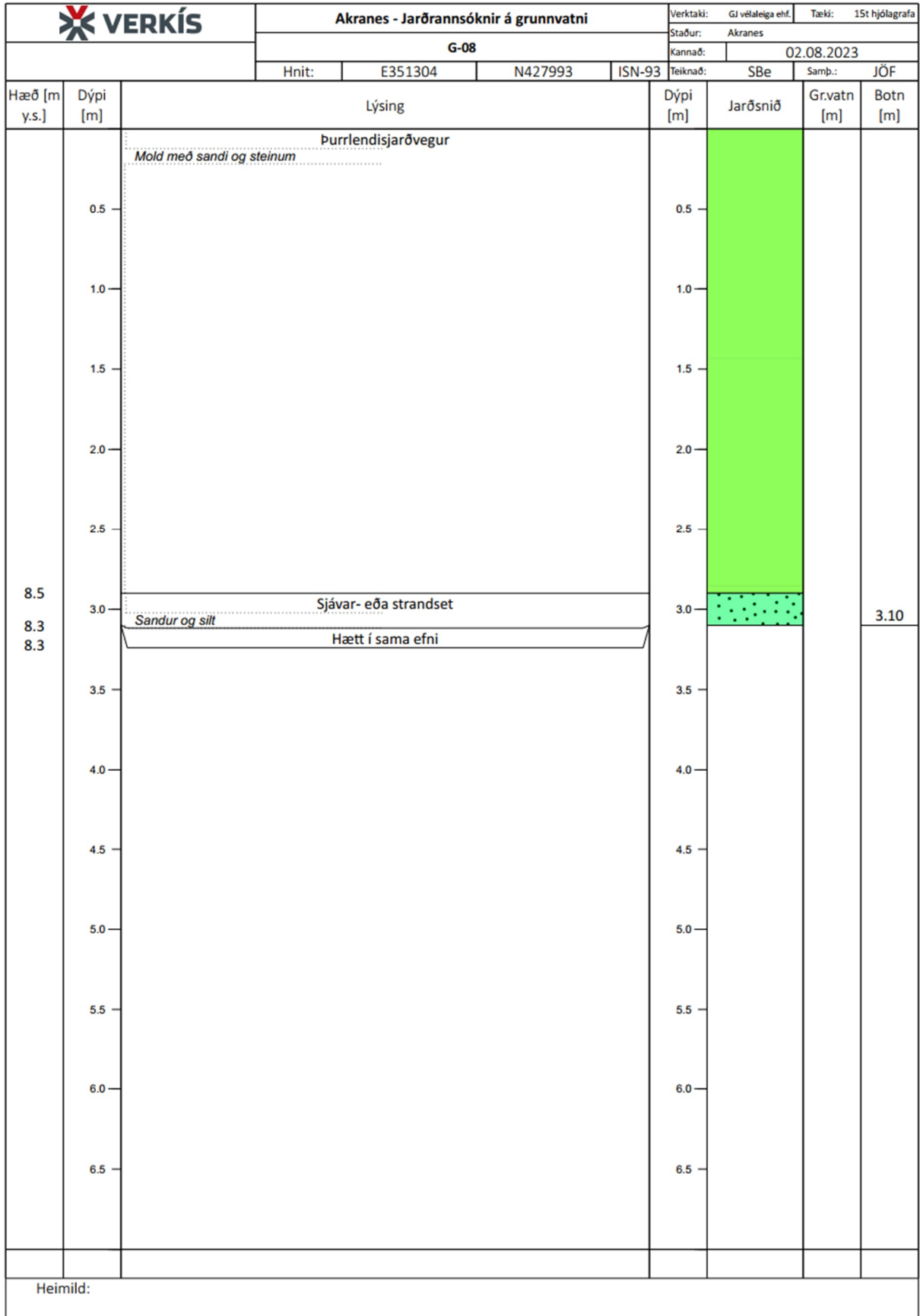


Mynd A- 4 Gryfja G-04



VERKÍS		Akranes - Jarðrannsóknir á grunnvatni				Verktaki: Gí veltaleiga ehf.	Tæki: 15t hjólagrafa	
		G-06				Staður: Akranes		
						Kannað: 02.08.2023		
		Hnit:	E351620	N428391	ISN-93	Teiknað: SBe	Samþ.: JÓF	
Hæð [m y.s.]	Dýpi [m]	Lýsing			Dýpi [m]	Jarðsnið	Gr.vatn [m]	Botn [m]
		Mýrarjarðvegur						
		<i>Mold með sandi, mól og steinum</i>						
	0.5				0.5			
	1.0				1.0			
5.1	1.5	Sjávar- eða strandset			1.5			
		<i>Sandur með slit</i>						
	2.0				2.0			
4.2	2.5	Hætt í sama efni			2.5		▼	2.40
4.2								
	3.0				3.0			
	3.5				3.5			
	4.0				4.0			
	4.5				4.5			
	5.0				5.0			
	5.5				5.5			
	6.0				6.0			
	6.5				6.5			
Heimild:								







Mynd A- 5 Gryfja G-05



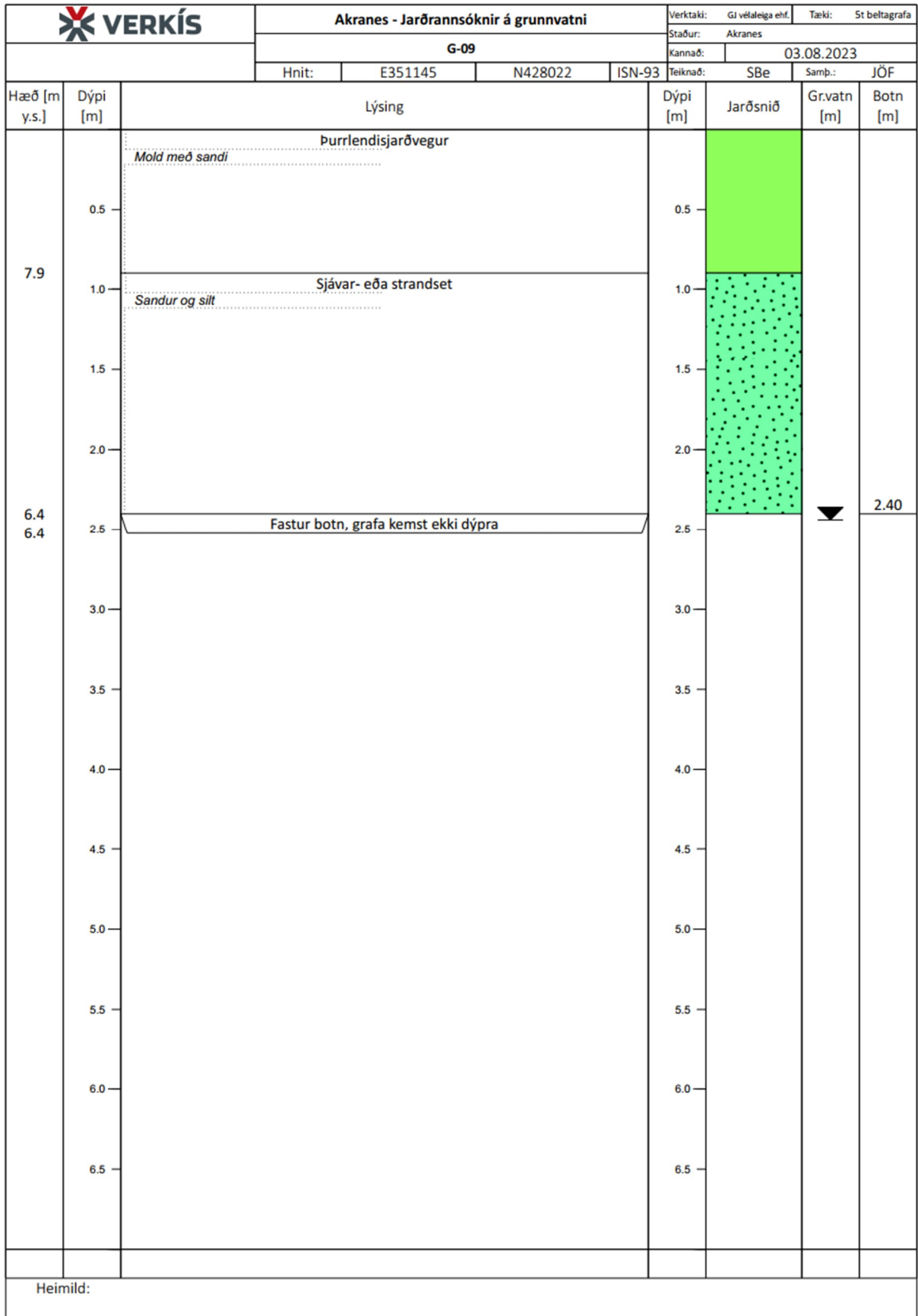
Mynd A- 6 Gryfja G-06

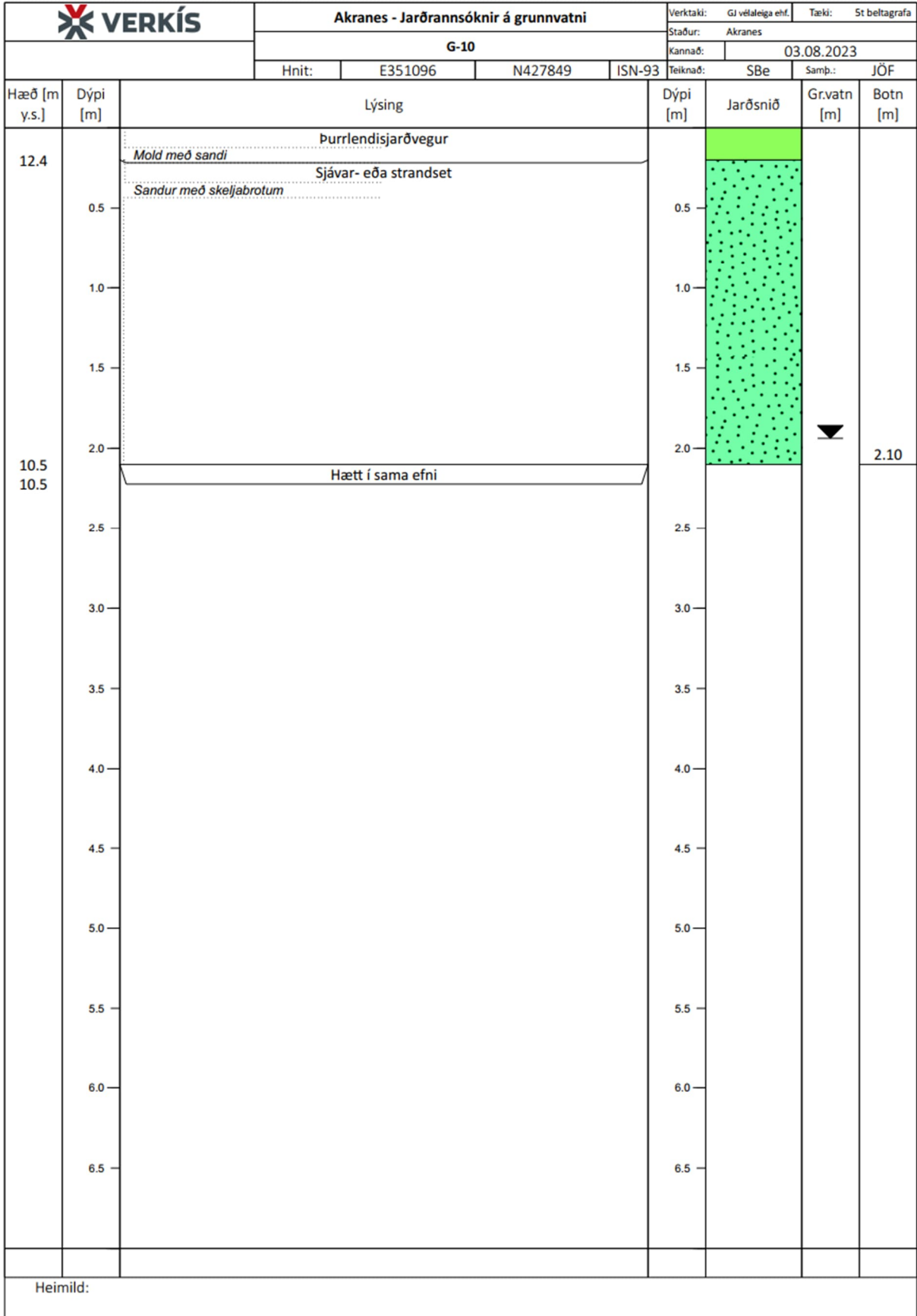


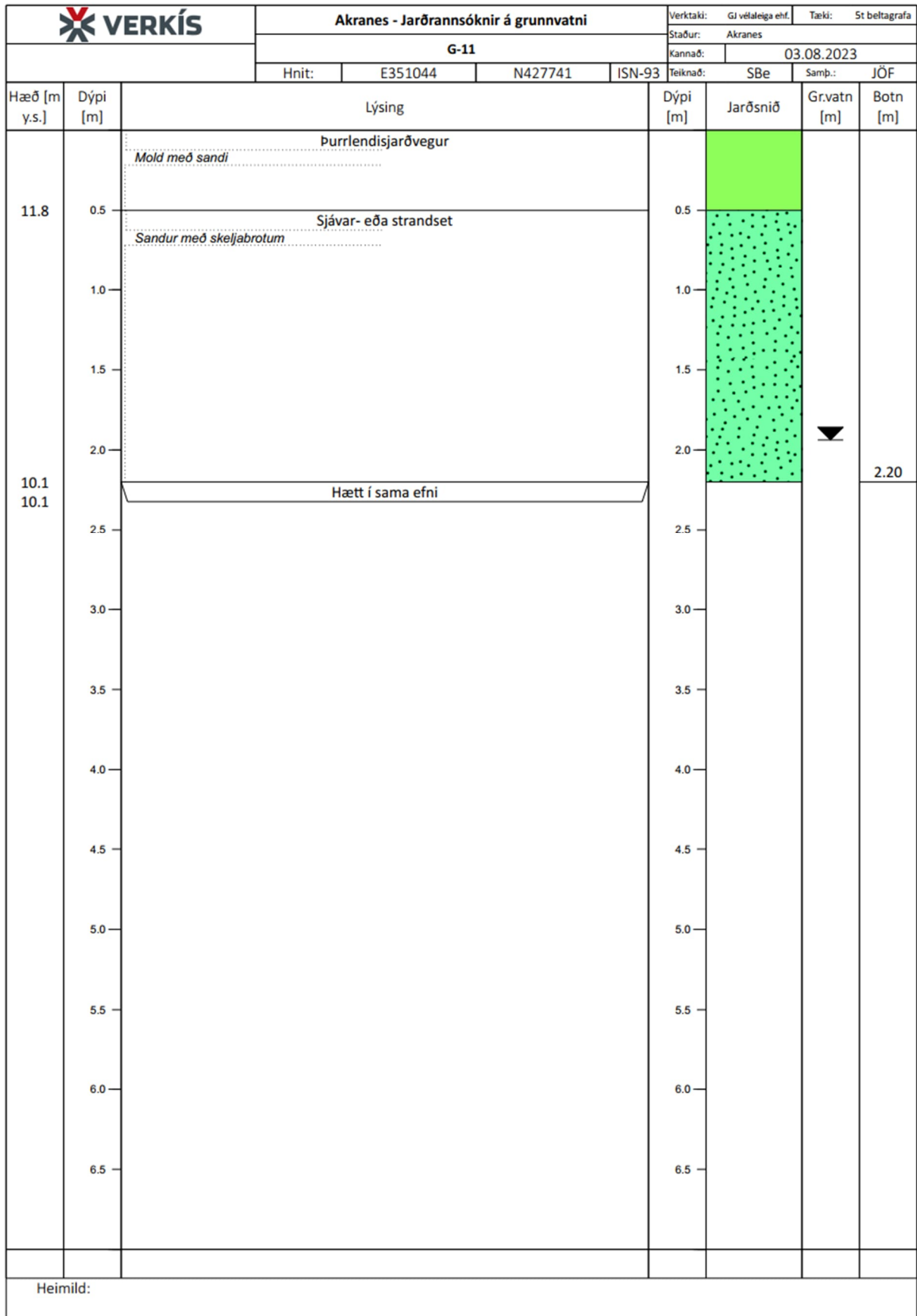
Mynd A- 7 Gryfja G-07



Mynd A- 8 Gryfja G-08







VERKÍS		Akranes - Jarðrannsóknir á grunnvatni				Verktaki: GJ vélaeiga ehf.	Tæki: St beltagrafa	
		G-12				Staður: Akranes		
		Hnit: E350950	N427773	ISN-93		Kannað: 03.08.2023		
				Teiknað: SBe	Samp.: JÖF			
Hæð [m y.s.]	Dýpi [m]	Lýsing			Dýpi [m]	Jarðsnið	Gr.vatn [m]	Botn [m]
9.4	0.5	Þurrlandisjarðvegur			0.5			
	1.0	Sjávar- eða strandset						
7.8	2.5	Hætt í sama efni			2.5			2.40
	6.5							
Heimild:								



Mynd A- 9 Gryfja G-09



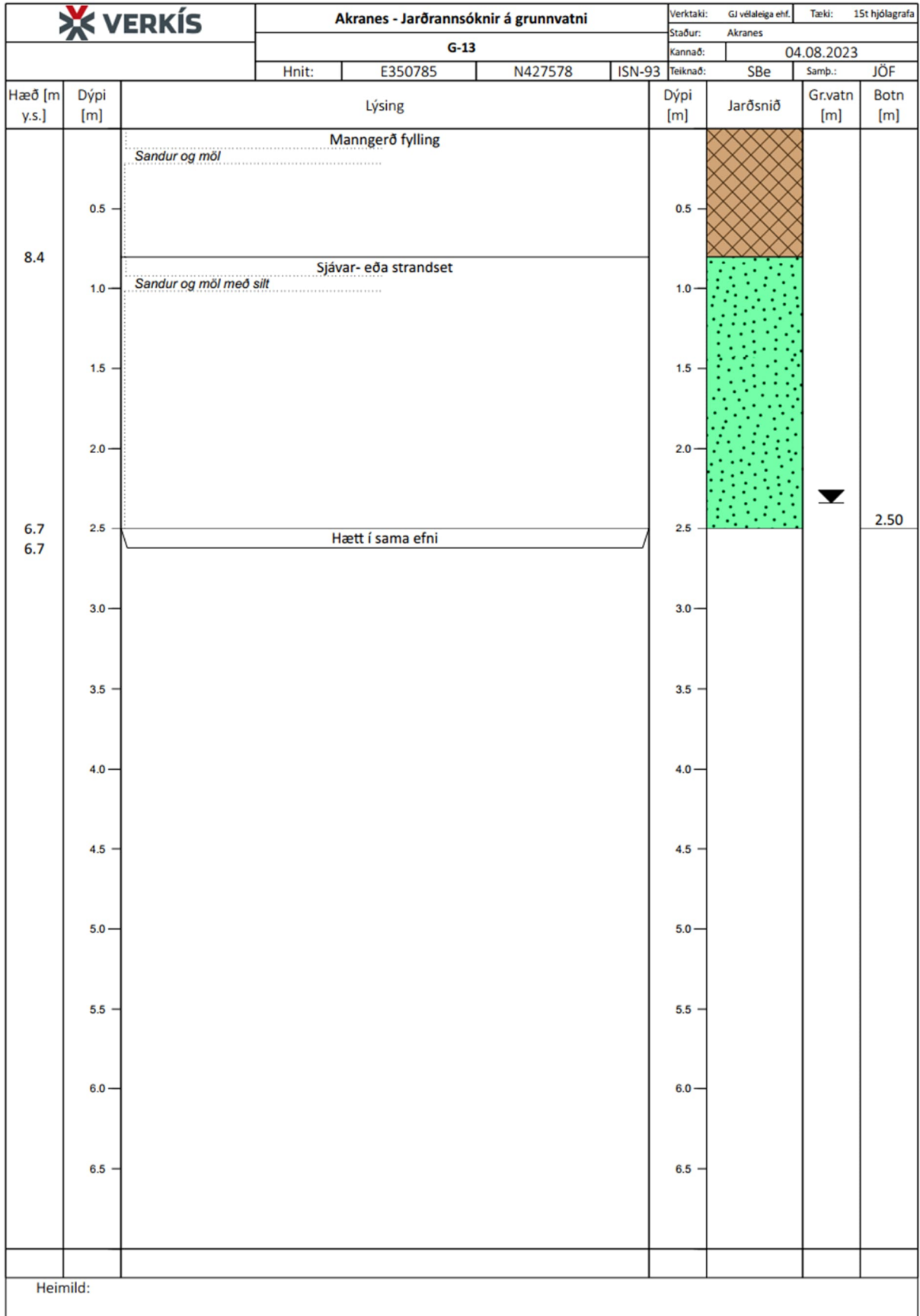
Mynd A- 10 Gryfja G-10

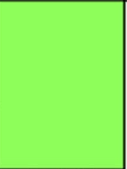
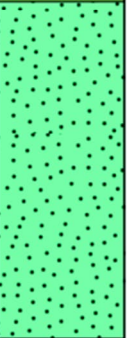


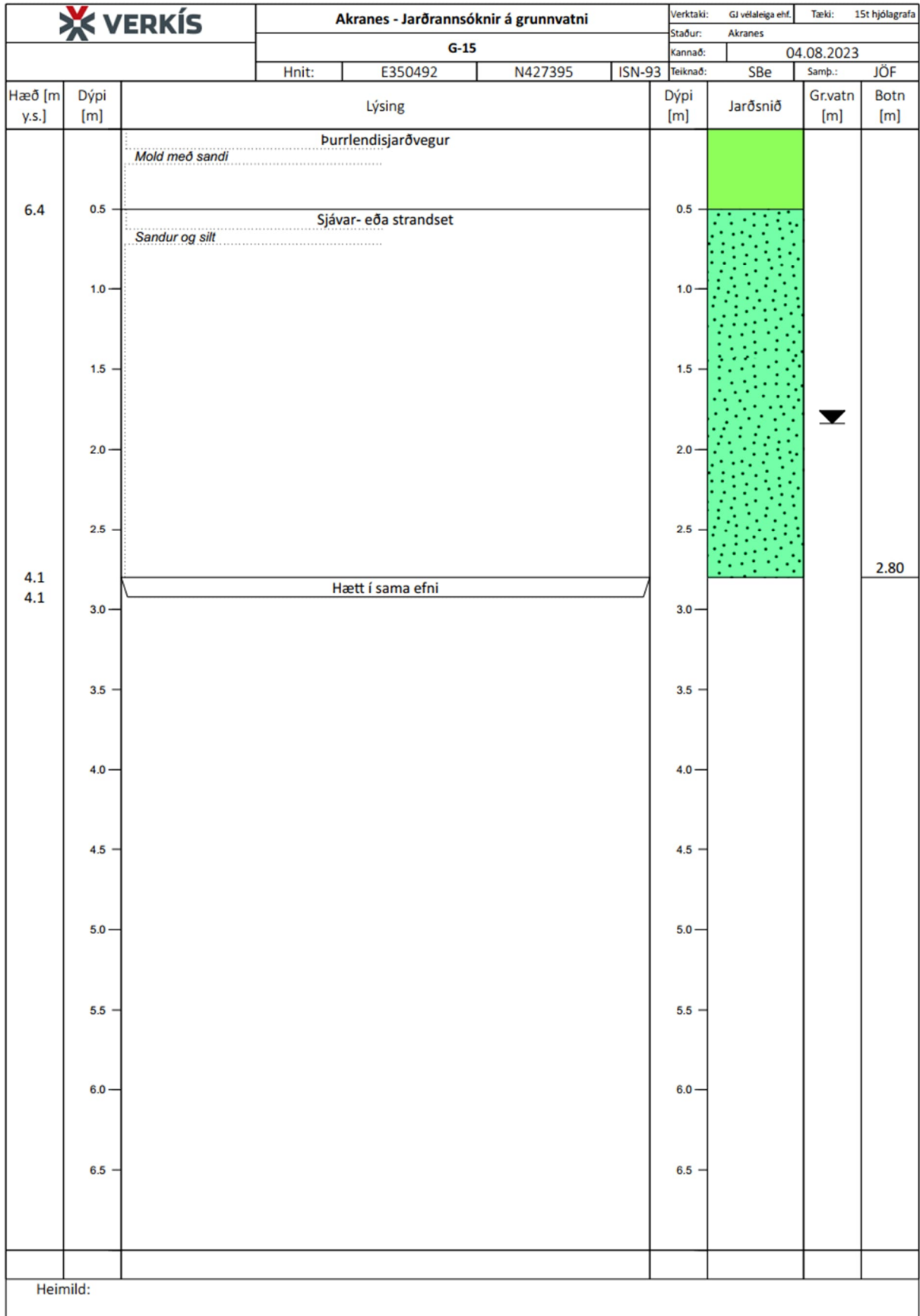
Mynd A- 11 Gryfja G-11

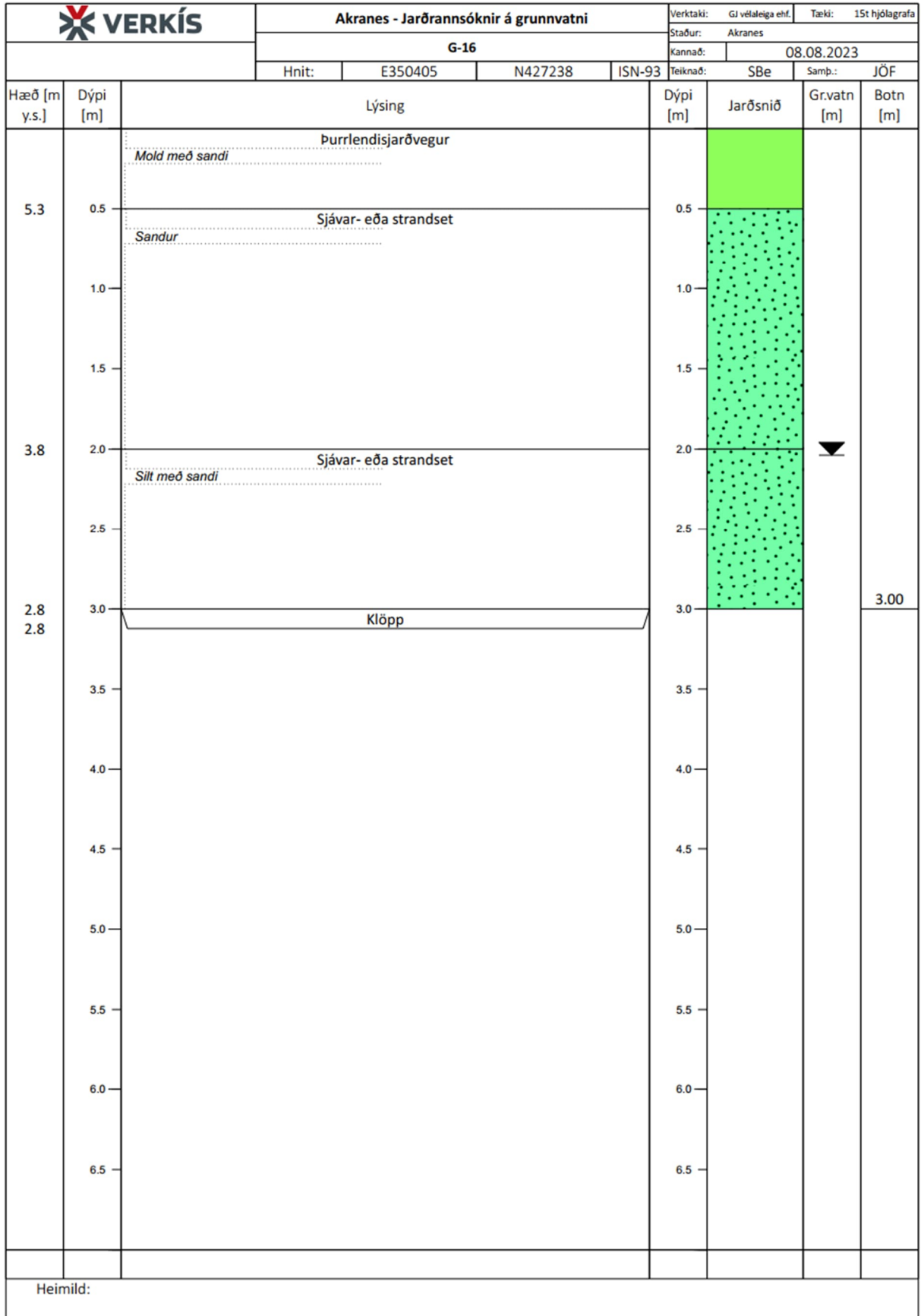


Mynd A- 12 Gryfja G-12



VERKÍS		Akranes - Jarðrannsóknir á grunnvatni				Verktaki: GJ vétaleiga ehf.	Tæki: St beltagrafa	
		G-14				Staður: Akranes		
						Kannað: 04.08.2023		
		Hnit:	E350634	N427436	ISN-93	Teiknað: SBe	Samþ.: JÖF	
Hæð [m y.s.]	Dýpi [m]	Lýsing			Dýpi [m]	Jarðsnið	Gr.vatn [m]	Botn [m]
7.4	0.5	Þurrlendisjarðvegur			0.5			
		<i>Möld með sandi. Leyfar af plasti og rusli.</i>						
5.8 5.8	1.0	Sjávar- eða strandset			1.0			
		<i>Sandur og mól með steinum</i>						
	1.5							
	2.0							
	2.5	Hætt í sama efni						
	2.5				2.5		▼	2.40
	3.0				3.0			
	3.5				3.5			
	4.0				4.0			
	4.5				4.5			
	5.0				5.0			
	5.5				5.5			
	6.0				6.0			
	6.5				6.5			
Heimild:								







Mynd A- 13 Gryfja G-13



Mynd A- 14 Gryfja G-14




Mynd A- 15 Gryfja G-15

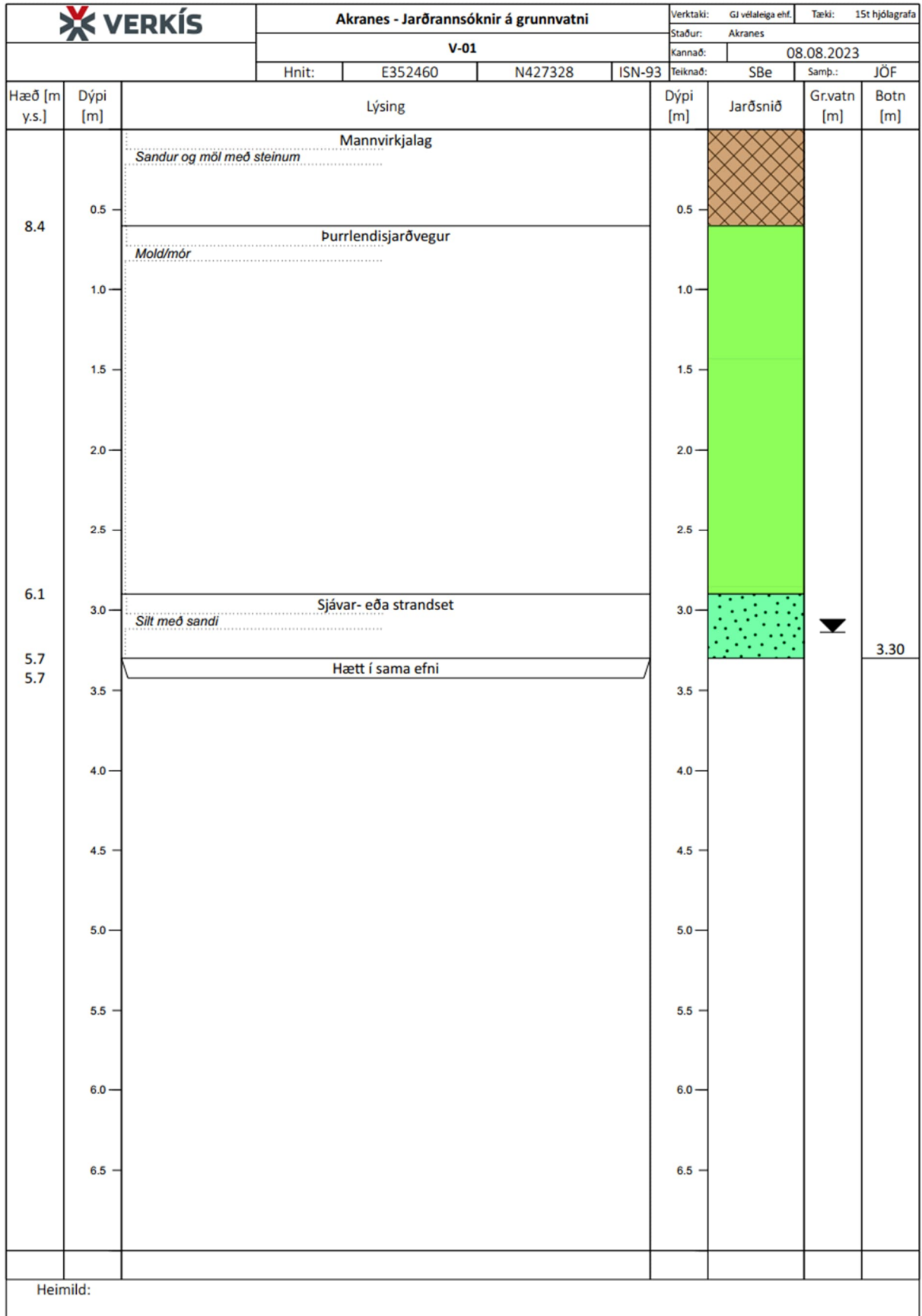


Mynd A- 16 Gryfja G-16

VERKÍS		Akranes - Jarðrannsóknir á grunnvatni				Verktaki: GJ vétaleiga ehf.	Tæki: St beltagrafa		
		G-17				Staður: Akranes			
						Kannað: 08.08.2023			
		Hnit:	E350677	N427364	ISN-93	Teiknað: SBe	Samp.: JÖF		
Hæð [m y.s.]	Dýpi [m]	Lýsing				Dýpi [m]	Jarðsnið	Gr.vatn [m]	Botn [m]
		Þurrlendisjarðvegur							
		<i>Mold með sandi. Mannvistaleyfar: steypa og tré</i>							
	0.5					0.5			
8.9	1.0	Sjávar- eða strandset				1.0			
		<i>Sandur og mól með steinum</i>							
	1.5					1.5			
8.1	2.0	Klökk				2.0			1.80
8.1	2.0					2.0			
	2.5					2.5			
	3.0					3.0			
	3.5					3.5			
	4.0					4.0			
	4.5					4.5			
	5.0					5.0			
	5.5					5.5			
	6.0					6.0			
	6.5					6.5			
Heimild:									

VERKÍS		Akranes - Jarðrannsóknir á grunnvatni				Verktaki: GJ vétaleiga ehf.	Tæki: St beltagrafa		
		G-18				Staður: Akranes			
						Kannað: 08.08.2023			
		Hnit:	E350662	N427347	ISN-93	Teiknað: SBe	Samþ.: JÖF		
Hæð [m y.s.]	Dýpi [m]	Lýsing				Dýpi [m]	Jarðsnið	Gr.vatn [m]	Botn [m]
7.1	0.5	Raskaður jarðvegur <i>Mold með sandi mól og steinum</i>				0.5			2.00
	1.0								
	1.5								
	2.0								
	2.5								
	3.0								
	3.5								
	4.0								
	4.5								
	5.0								
	5.5								
	6.0								
6.5									
Heimild:									

VERKÍS		Akranes - Jarðrannsóknir á grunnvatni				Verktaki: GJ vétaleiga ehf.	Tæki: St beltagrafa		
		G-19				Staður: Akranes			
		Hnit:	E350678	N427260	ISN-93	Kannað: 08.08.2023			
						Teiknað: SBe	Samþ.: JÖF		
Hæð [m y.s.]	Dýpi [m]	Lýsing				Dýpi [m]	Jarðsnið	Gr.vatn [m]	Botn [m]
		Þurrlendisjarðvegur							
	0.5	<i>Mold með sandi</i>				0.5			
8.5	1.0					1.0			
		Sjávar- eða strandset							
	1.5	<i>Sandur með skeljabrotum</i>				1.5			
7.6	2.0					2.0			
		Sjávar- eða strandset							
	2.5	<i>Sandur og mól með stóku steinum</i>				2.5			
7.0	3.0					3.0			2.70
7.0	3.0	Fastur botn, grafa kemst ekki dýpra				3.0			
	3.5					3.5			
	4.0					4.0			
	4.5					4.5			
	5.0					5.0			
	5.5					5.5			
	6.0					6.0			
	6.5					6.5			
Heimild:									





Mynd A- 17 Gryfja G-17



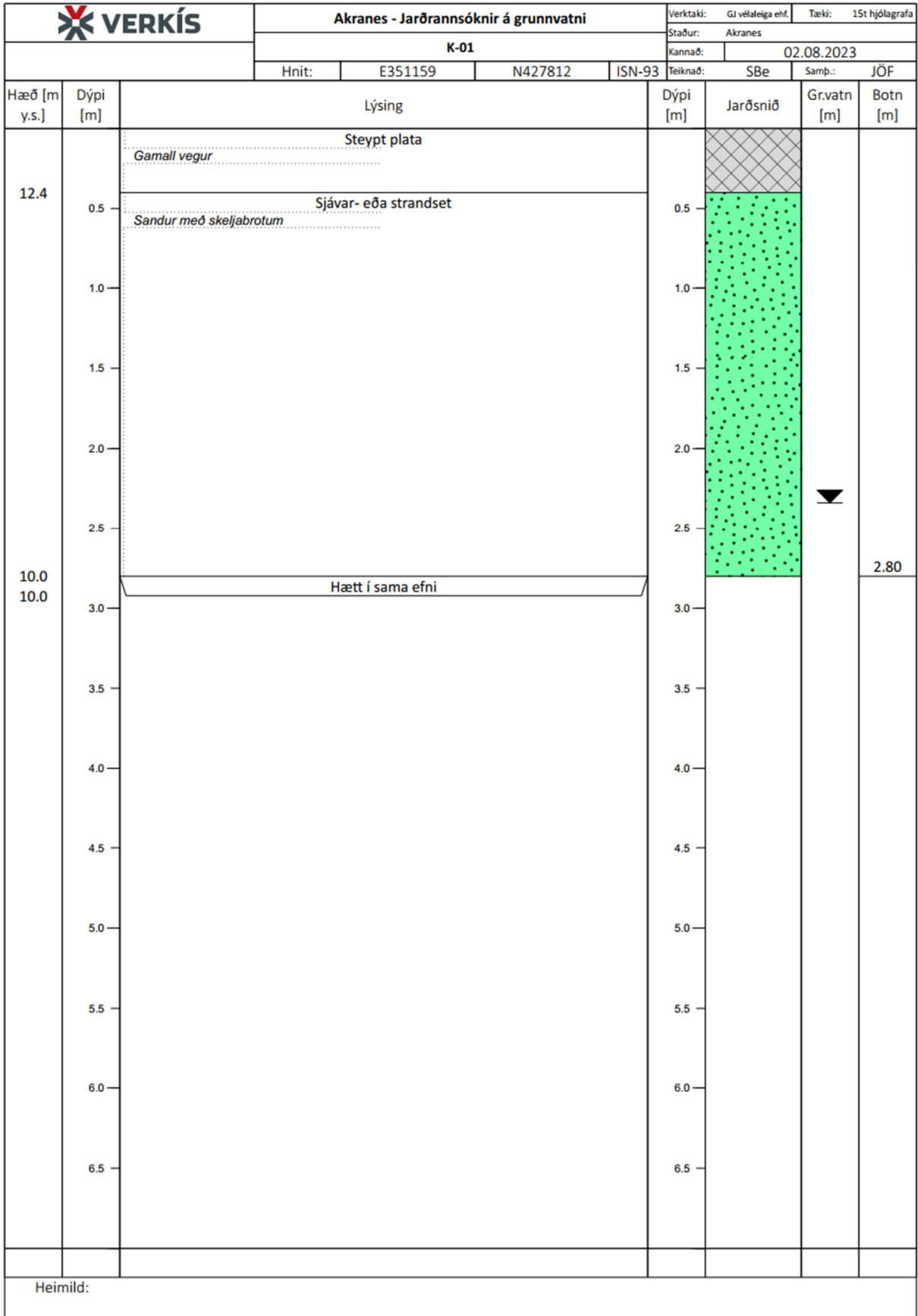
Mynd A- 18 Gryfja G-18



Mynd A- 19 Gryfja G-19



Mynd A- 20 Gryfja V-01





Mynd A- 21 Gryfja K-01








Mynd A- 22 Vesturgata 81 (opin gryfja)





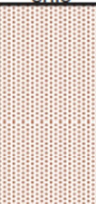


Mynd A- 23 Vesturgata 81 (opin gryfja)

Viðauki D - Gryfjulýsingar 2007

		Fráveitukerfi á Akranesi Gryfja AG02				Verktaki: Vélaleiga HS.	Tæki: 14 t skurðgrafa			
		Hnit: X:351344 Y:428494 Hæð: 5,03 m y.s. ISN 93				Staður: NA Ægisbrautar Grafið: 27.júlí 2007 Teiknað: des.-2007 / MM				
Hæð m y.s.	Dýpi m	Jarðefni	Jarðmyndun	Cobra	Dýpi m	Jarðefna snið	Vatn m	Botn m	Lagsk. m	Prófanir á sýni
4,4		Mold Inniheldur sand og mól	Raskaður jarðvegur Litt burðarhæf jarðmyndun						0,6	
	1,0	Sandrík finmöl	Sjávar- eða strandset		1,0					
	2,0				2,0					
2,3									2,7	
1,9	3,0	Silt	Sjávar- eða strandset		3,0			3,1	3,1	
		Basalt?	Berggrunnur?							
	4,0				4,0					
	5,0				5,0					
	6,0				6,0					






Ljósmynd:



		Fráveitukerfi á Akranesi Gryfja AG04				Verktaki: Vélaleiga HS.		Tæki: 14 t skurðgrafa		
		Hnit: X:351509 Y:428494 Hæð: 6,90 m y.s. ISN 93				Staður: SA Kalmansvíkur Grafið: 27.júlí 2007 Teiknað: des.-2007 / MM				
Hæð m y.s.	Dýpi m	Jarðefni	Jarðmyndun	Cobra	Dýpi m	Jarðefna sníð	Vatn m	Botn m	Lagsk. m	Prófanir á sýni
	1,0	Mör	Mýrarjarðvegur		1,0					
4,8	2,0	Silt Vottur af mól og steinum	Sjávar- eða strandset		2,0				2,1	
4,3		Sandur	Sjávar- eða strandset				2,6		2,6	
4,0	3,0	Greftri hætt			3,0			2,9		
	4,0				4,0					
	5,0				5,0					
	6,0				6,0					



Ljósmynd:



		Fráveitukerfi á Akranesi Gryfja AG05					Verktaki: Vélaleiga HS.	Tæki: 14 t skurðgrafa		
		Hnit: X:351610 Y:428468 Hæð: 5,84 m y.s. ISN 93					Staður: NV tjaldsvæðis Grafið: 27.júlí 2007 Teiknað: des.-2007 / MM			
Hæð m y.s.	Dýpi m	Jarðefni	Jarðmyndun	Cobra	Dýpi m	Jarðefna snið	Vatn m	Botn m	Lagsk. m	Prófanir á sýni
4,4	1,0	Mór Trefjarikur	Mýrarjarðvegur		1,0				1,4	
3,7	2,0	Möl Sandrík með steinum	Sjávar- eða strandset		2,0		2,1		2,1	
1,7	3,0	Silt Vottur af mól	Sjávar- eða strandset		3,0					
	4,0	Greftri hætt			4,0			4,1		
	5,0				5,0					
	6,0				6,0					






Ljósmynd:



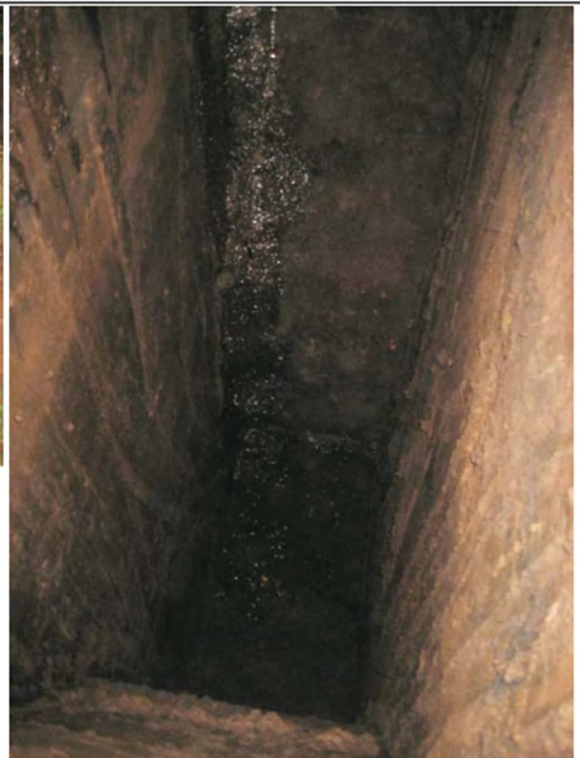
		Fráveitukerfi á Akranesi Gryfja AG06				Verktaki: Vélaleiga HS.	Tæki: 14 t skurðgrafa			
		Hnit: X:351059 Y:428218 Hæð: 4,34 m y.s. ISN 93				Staður: Stíllholt-Ægisbraut Grafið: 27.júlí 2007 Teiknað: des.-2007 / MM				
Hæð m y.s.	Dýpi m	Jarðefni	Jarðmyndun	Cobra	Dýpi m	Jarðefna snjó	Vatn m	Botn m	Lagsk. m	Prófanir á sýni
4.1		Möl Sandrík Mör Trefjaríkur	Fylling Mýrarjarðvegur						0.2	
	1.0				1.0					
	2.0				2.0				2.3	
2.0		Möl Sandrík og með sittlinsum	Sjávar- eða strandset				2.8		2.8	
1.5										
1.2		Silt	Sjávar- eða strandset							
	3.0	Greftri hætt			3.0			3.1		
	4.0				4.0					
	5.0				5.0					
	6.0				6.0					

Ljósmynd:



		Fráveitukerfi á Akranesi Gryfja AG13				Verktaki: Vélaleiga HS.	Tæki: 14 t skurðgrafa			
		Hnit: X:352464 Y:427316 Hæð: 9,29 m y.s. ISN 93				Staður: Innnesv. vest. elliheim. Grafið: 20.nóv.2007 Teiknað: jan.-2008 / GBÞ				
Hæð m y.s.	Dýpi m	Jarðefni	Jarðmyndun	Cobra AH27	Dýpi m	Jarðefna sníð	Vatn m	Botn m	Lagsk. m	Prófanir á sýni
9,0		Mold Mór	Raskaður jarðvegur Mýrarjarðvegur				0,6		0,3	
	1,0				1,0					
	2,0				2,0					
	3,0				3,0					
6,0		Silt	Sjávar- eða strandset						3,3	
5,4								3,9		
	4,0	Greftri hætt			4,0					
	5,0			4,8	5,0					
	6,0				6,0					

Ljósmynd:



Hæð m y.s.		Dýpi m	Jarðefni	Jarðmyndun	Cobra AH23	Dýpi m	Jarðefna snið	Vatn m	Botn m	Lagsk. m	Prófanir á sýni
3,4	1,0		Möl Harðpökkuð	Fylling	0,4	1,0				1,1	Silt: Laus rúmþyngd: 1,9 t/m ³ Hrist rúmþyngd: 2,0 t/m ³ Kornastærðardreifing: Sjá viðauka 3.5 Raki: 39,6%
2,4	2,0		Mór	Mýrarjarðvegur		2,0				2,1	
1,8	3,0		Silt	Sjávar- eða strandset				2,7	2,7	2,7	
	4,0		Basalt	Berggrunnur		3,0					
	5,0					4,0					
	6,0					5,0					
						6,0					

Ljósmynd:



Hæð m y.s.	Dýpi m	Jarðefni	Jarðmyndun	Cobra AH21	Dýpi m	Jarðefna snið	Vatn m	Botn m	Lagsk. m	Prófanir á sýni
7,2		Mold	Raskaður jarðvegur						0,3	Sandur: Laus rúmþyngd: 1,6 t/m ³ Hrist rúmþyngd: 1,8 t/m ³ Kornastærðardreifing: Sjá viðauka 3.5 Raki: 8,4%
	1,0	Mór	Mýrarjarðvegur		1,0					
5,4	2,0				2,0		2,1		2,1	
4,9		Sandur/steinar	Sjávar- eða strandset					2,6		
	3,0	Greftri hætt			3,0					
	4,0			3,6	4,0					
	5,0				5,0					
	6,0				6,0					

Ljósmynd:

