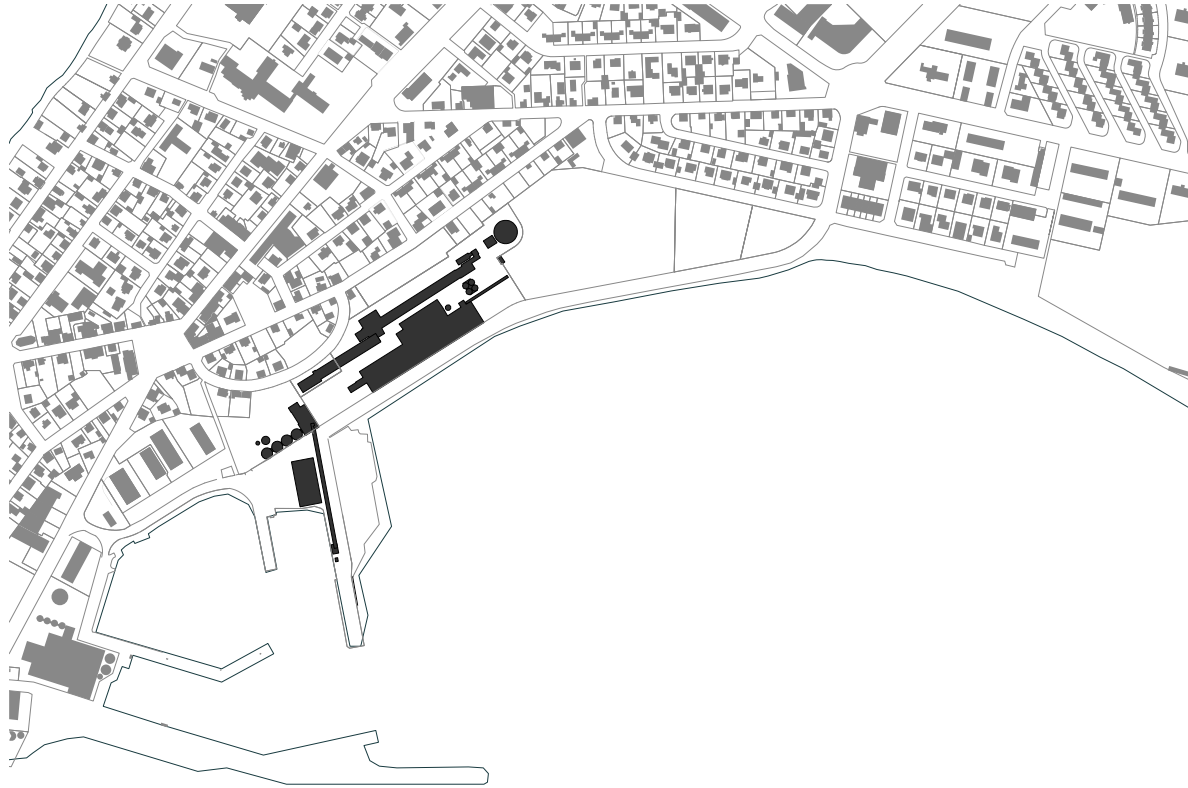




Sementsreiturinn

A

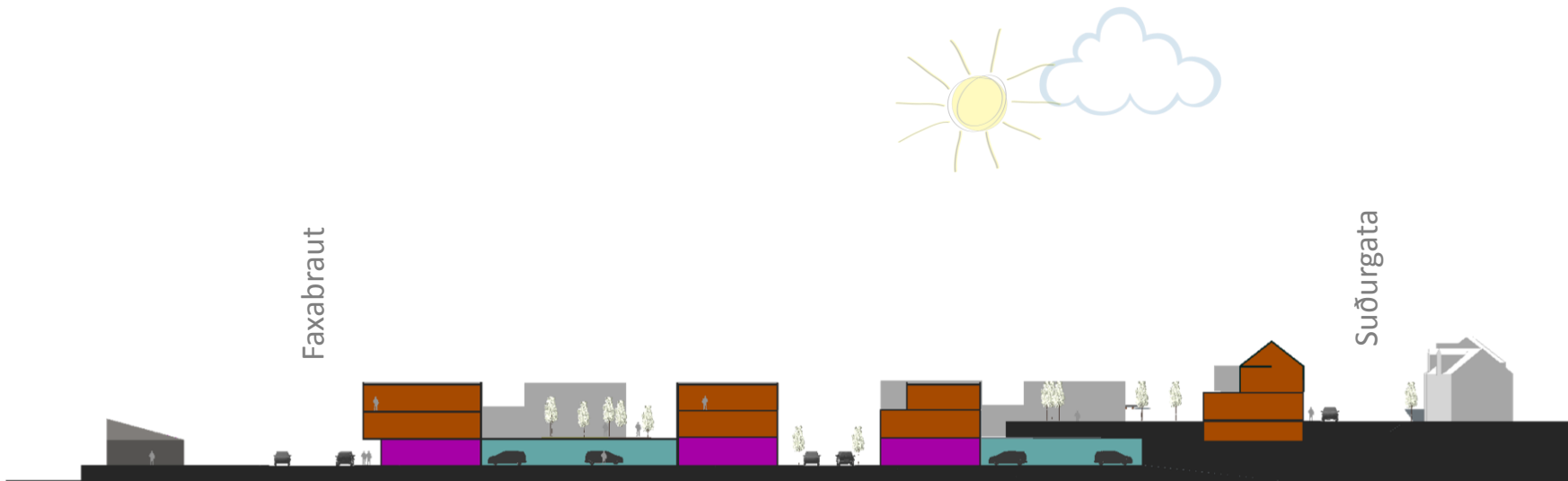




A_Núverandi byggðarmynstur



A_Nýtt byggðarmynstur



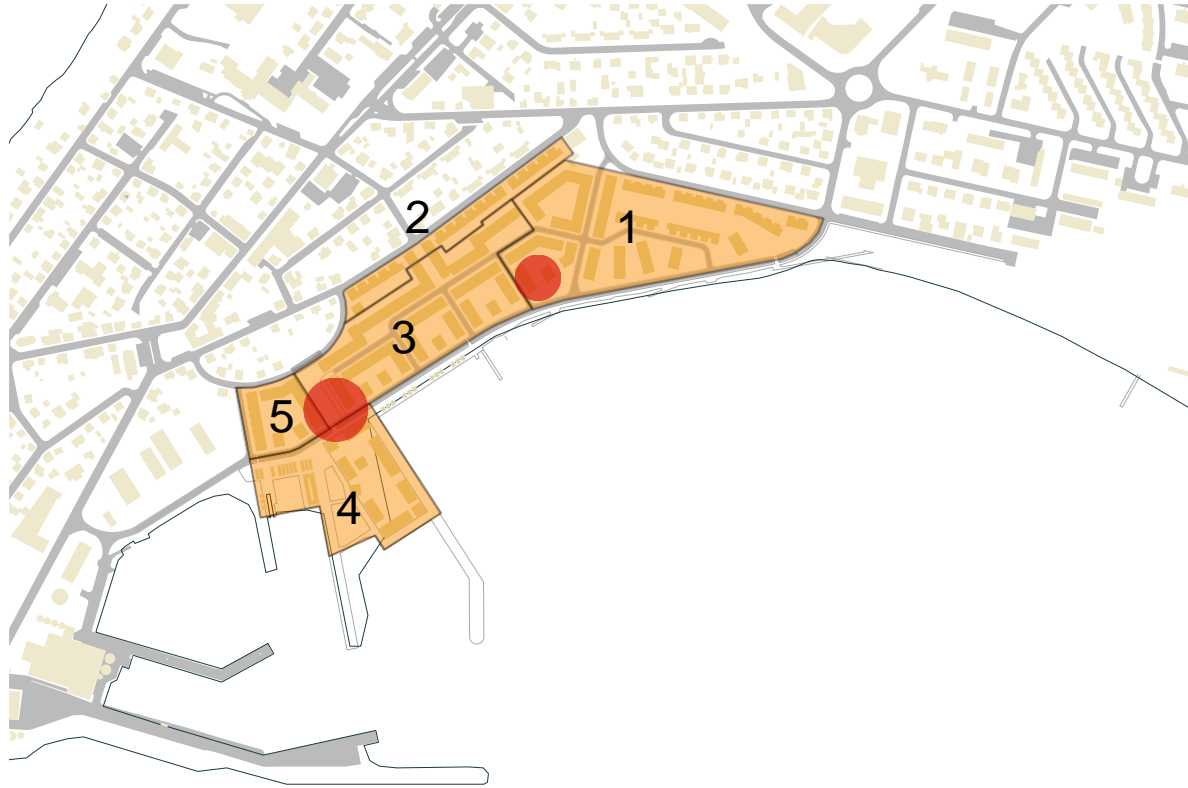


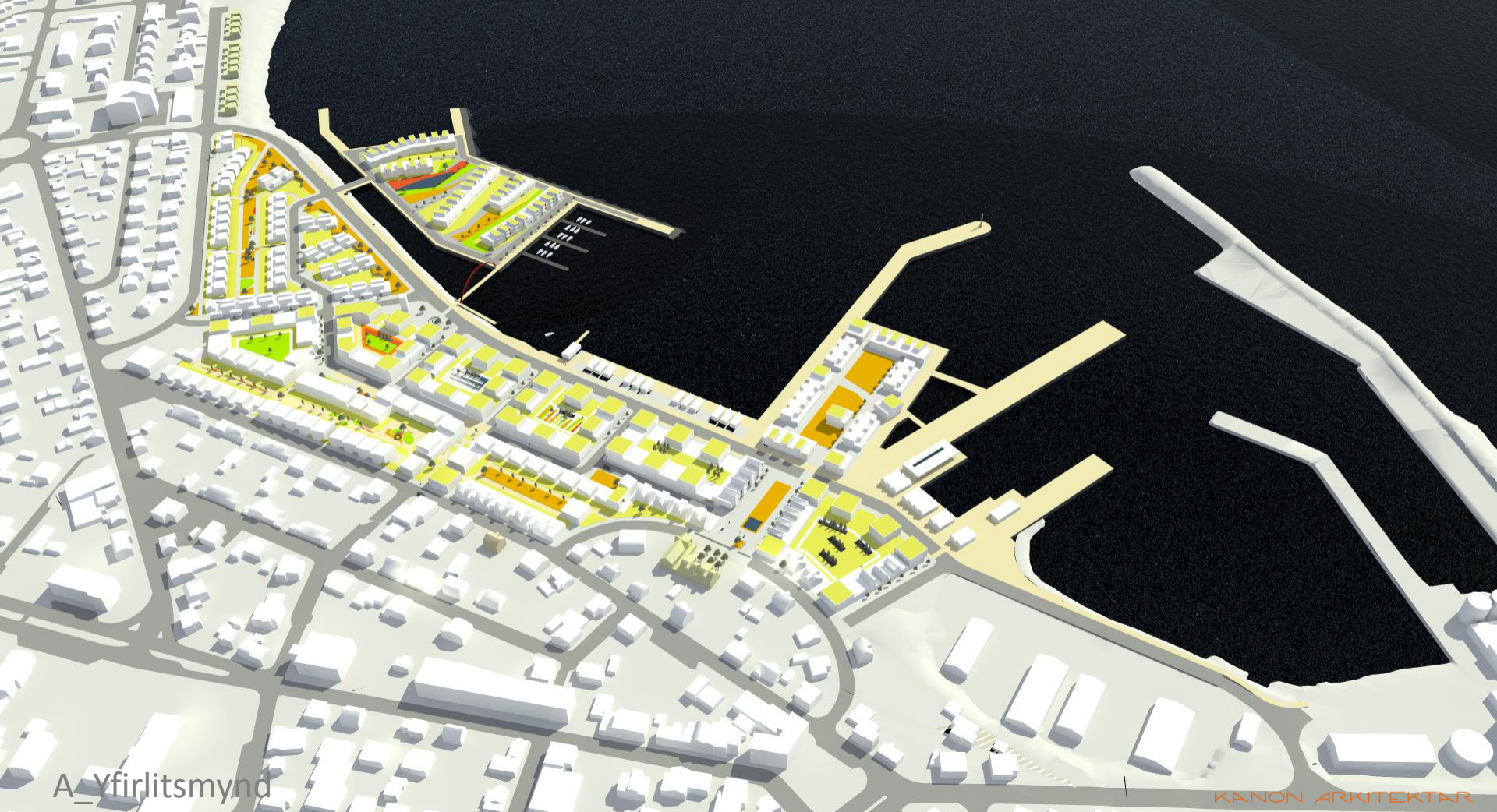


SEMENTSREITUR

RAMMASKIPULAG

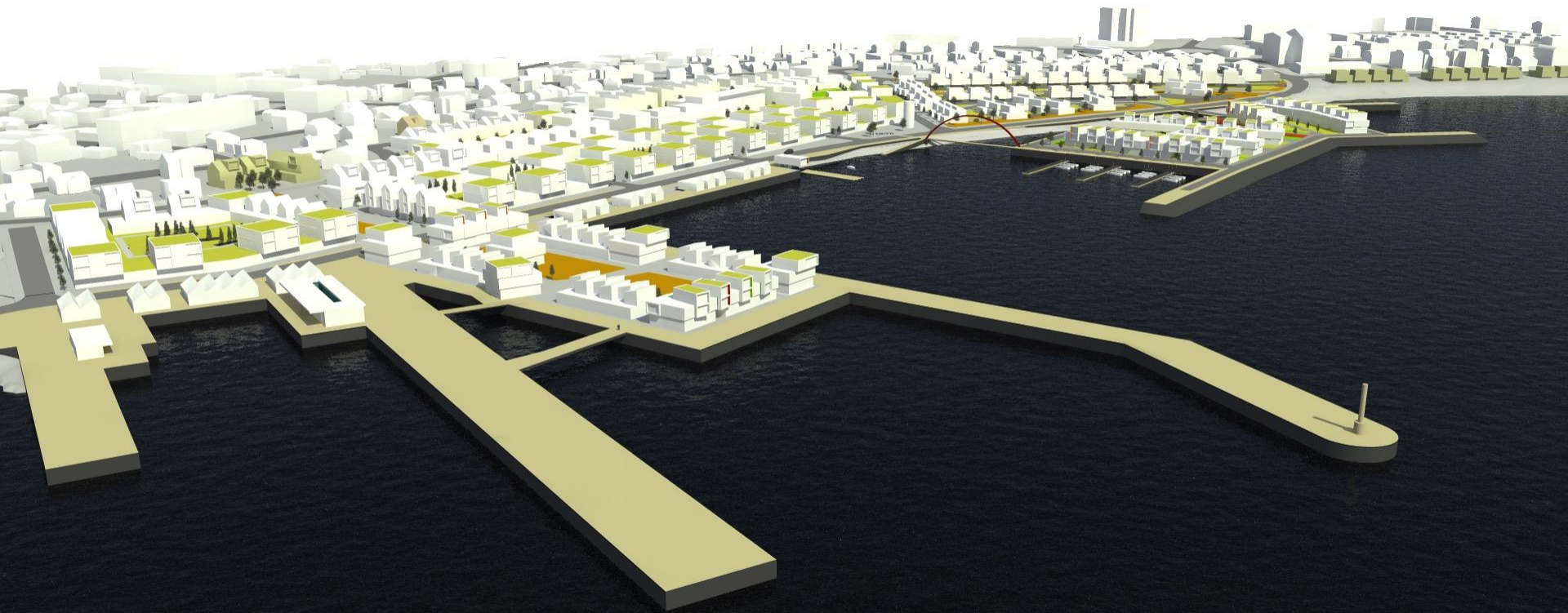
KANON ARKITEKTAR





A_Yfirlitsmynd

KANON ARKITEKTAR





A_Yfirlitsmynd – horft til vesturs

KANON ARKITEKTAR



A_Hafnarsvæðið

KANON ARKITEKTAR



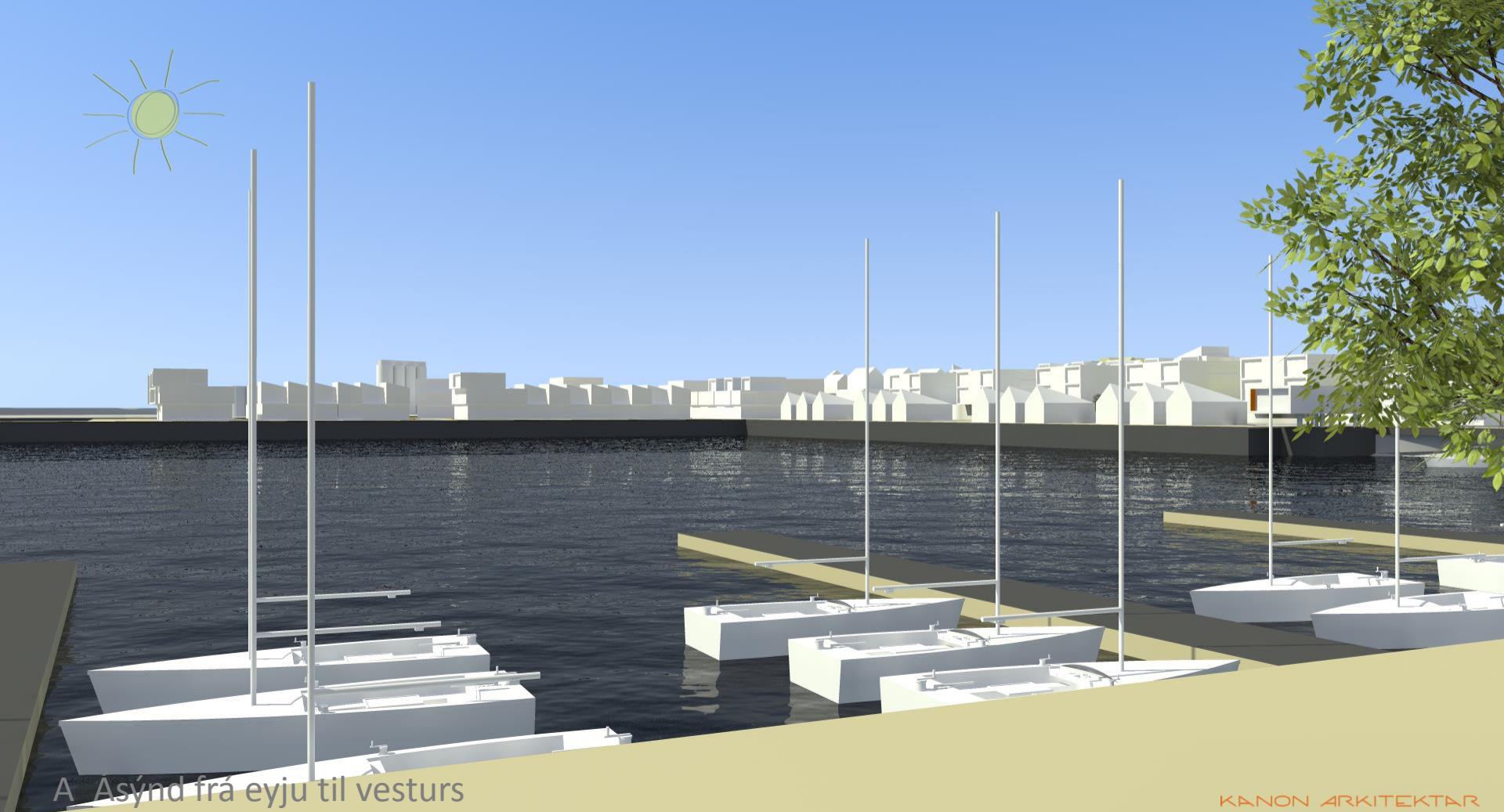
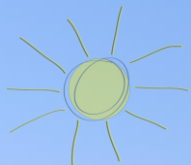
A_Sementsplaniņš

KANON ARHITEKTAR



A_Sementsplan og tröppur við Mánabraut

KANON ARKITEKTAR



A Asýnd frá eyju til vesturs



A_Byggð milli Suðurgötu og Faxabrautar

KANON ARKITEKTAR



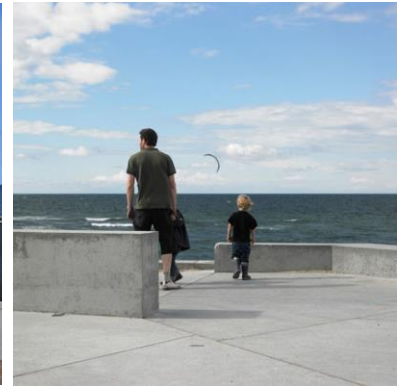
A_Dæmi um sameiginlegt garðrymi

ARKIÞON ARCHITECTS



A_Smábátahöfn og göngubrú við eyju

KANON ARKITEKTAR



A_Dæmi um bæjarrými, yfirbragð og efnisnotkun

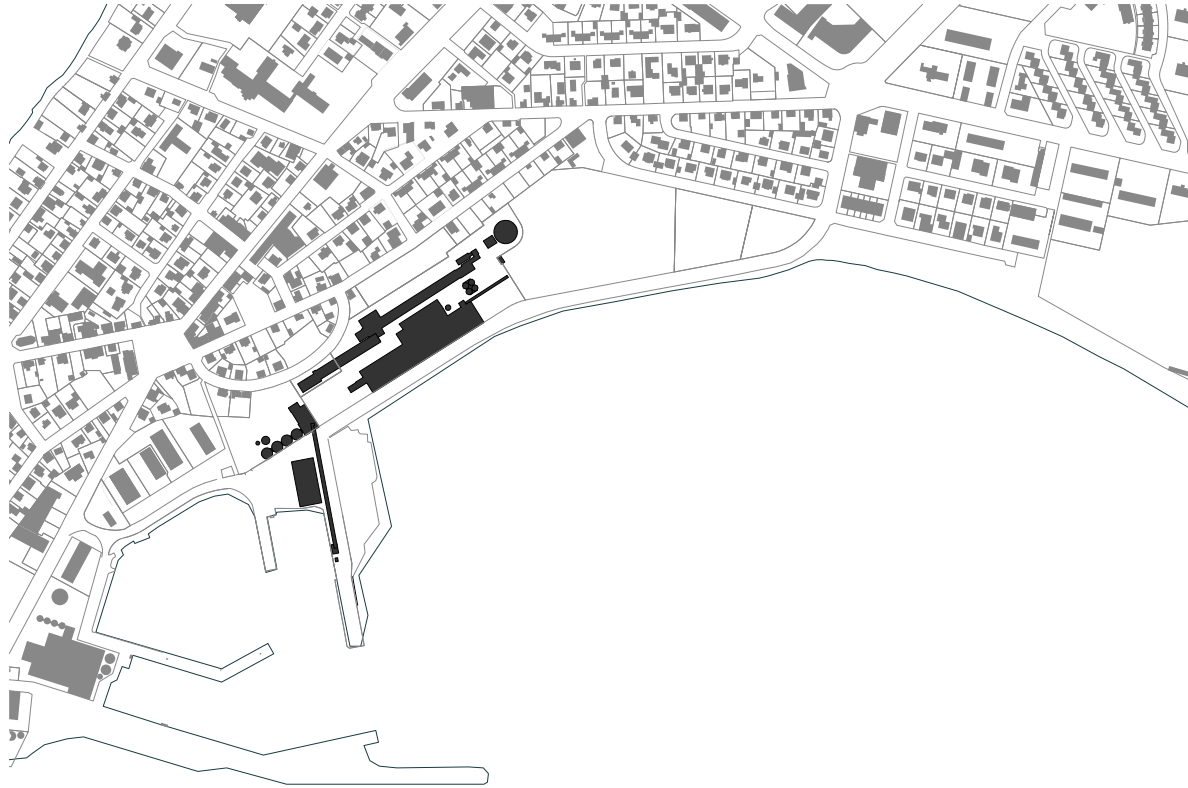


A_Dæmi um bæjarrými, yfirbragð og efnisnotkun

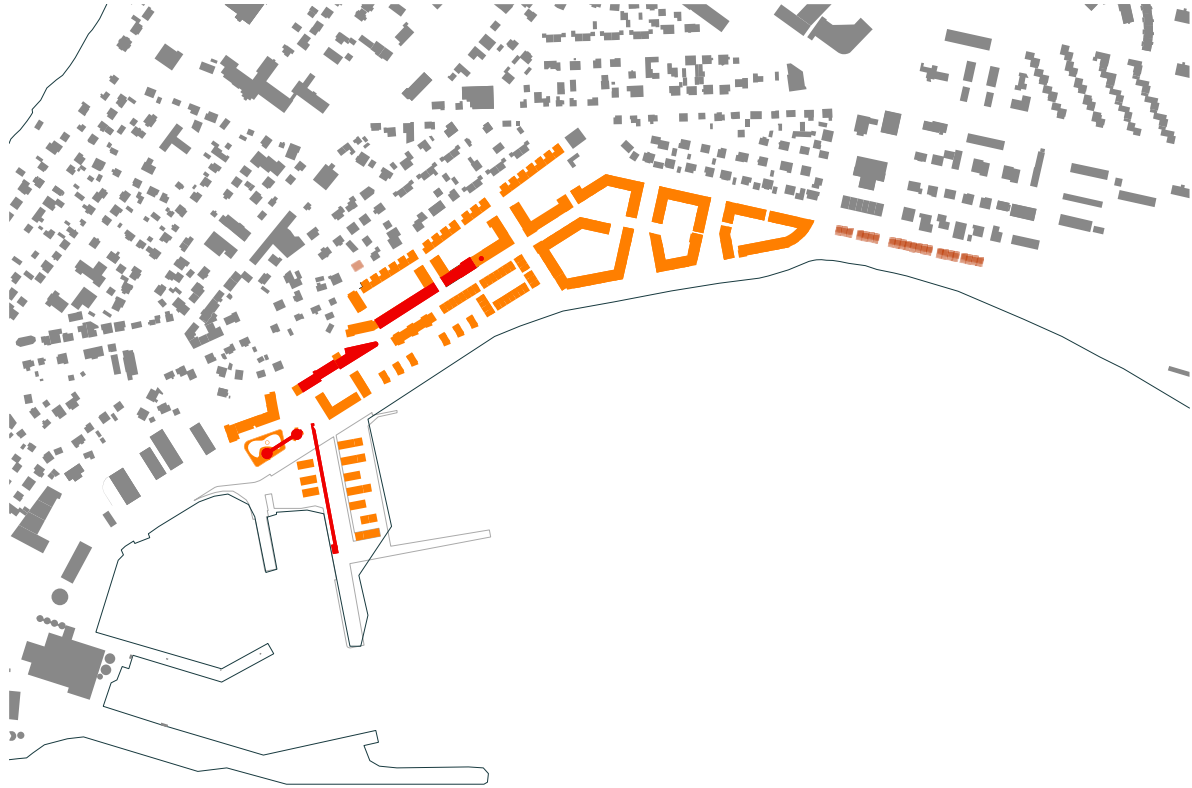
An architectural rendering of a modern building complex situated along a body of water. The buildings feature clean, geometric lines and large glass facades. A prominent structure on the left has a large, dark, rectangular frame. The water in the foreground is dark and reflects the buildings and sky. The overall aesthetic is minimalist and contemporary.

Sementsreiturinn

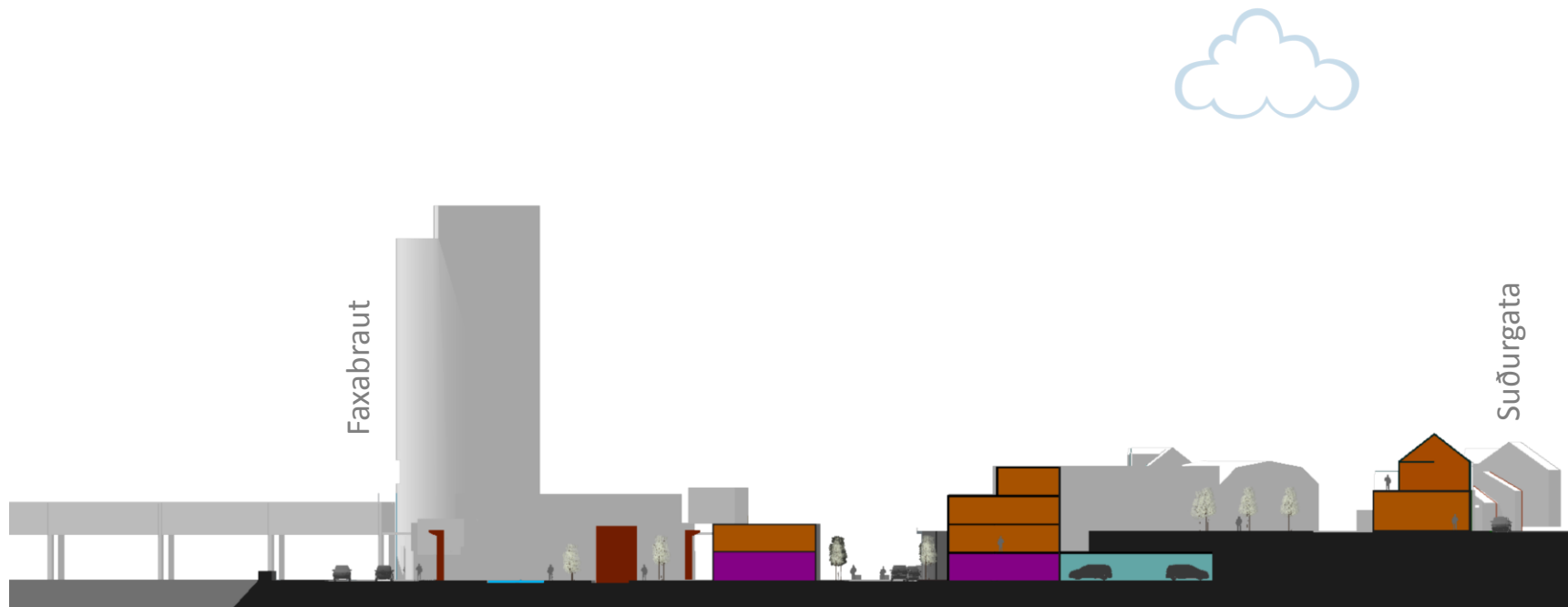
B

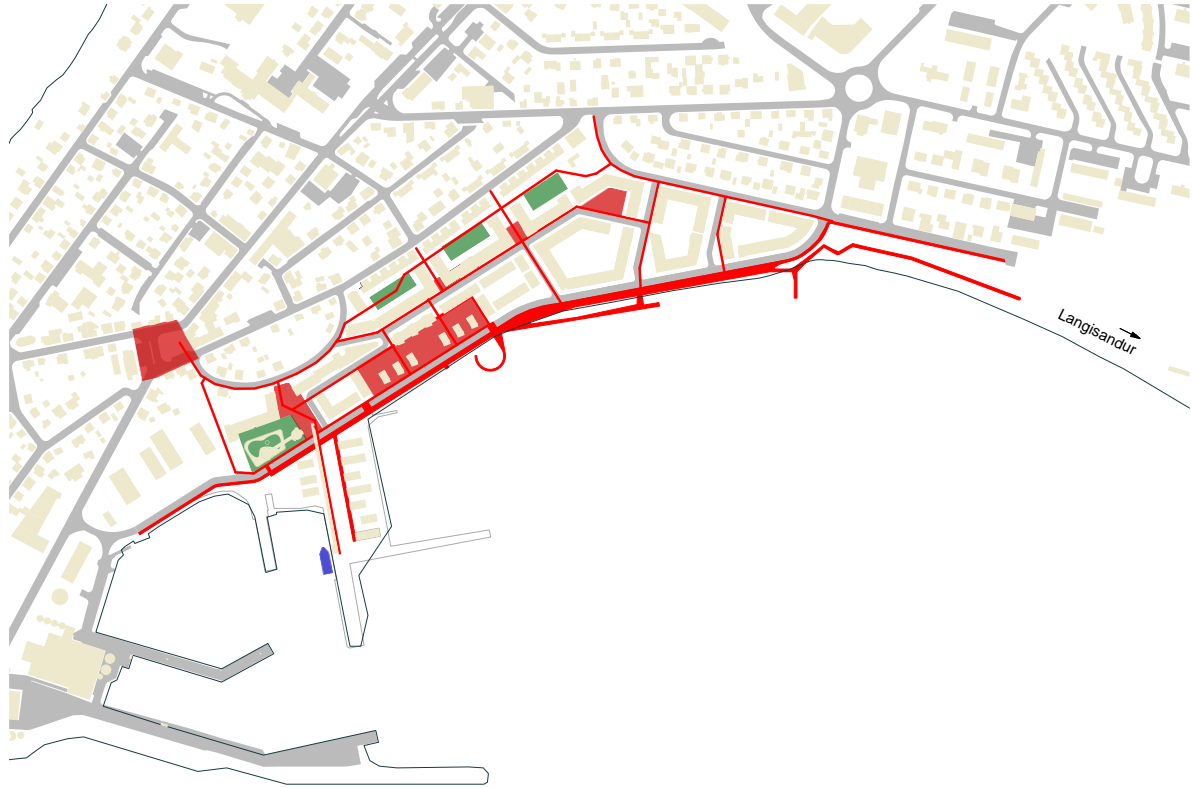


B_Núverandi byggðarmynstur



B_Nýtt byggðarmynstur



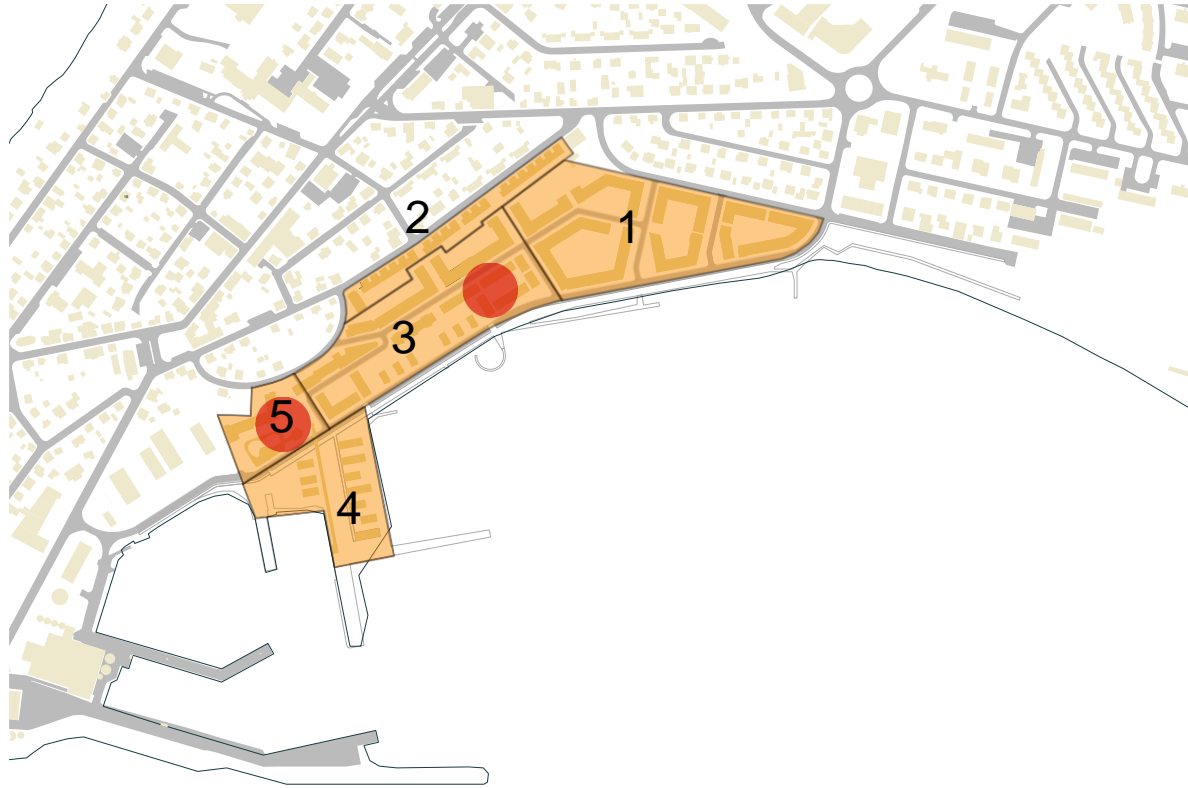




SEMENTSREITUR

RAMMASKIPULAG

KANON ARKITEKTAR







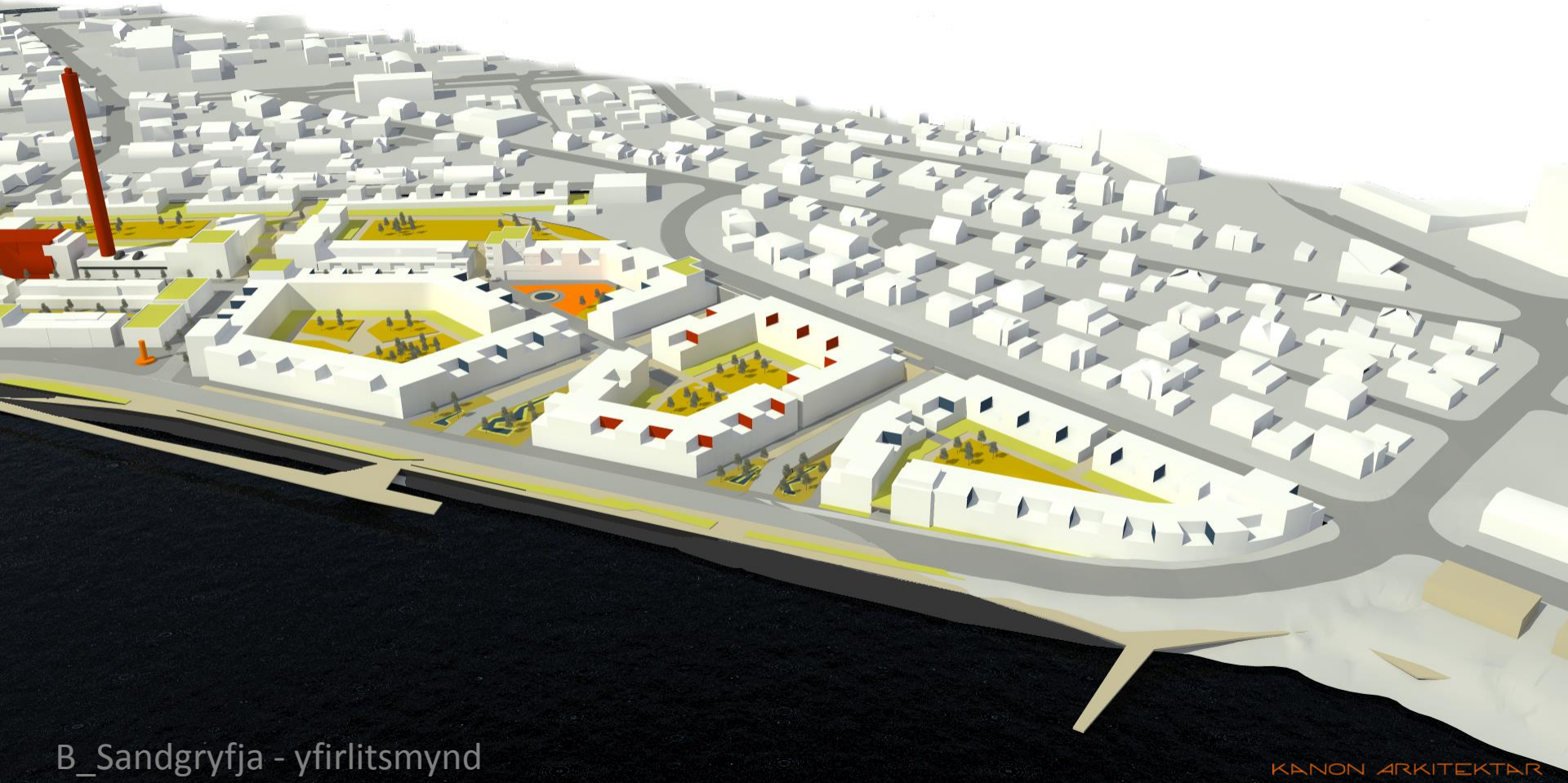
B_Sandgryfja - yfirlitsmynd

KANON ARKITEKTAR



B_Miðsvæði - Yfirlitsmynd

KANON ARKITEKTAR



B_Sandgryfja - yfirlitsmynd

KANON ARKITEKTAR



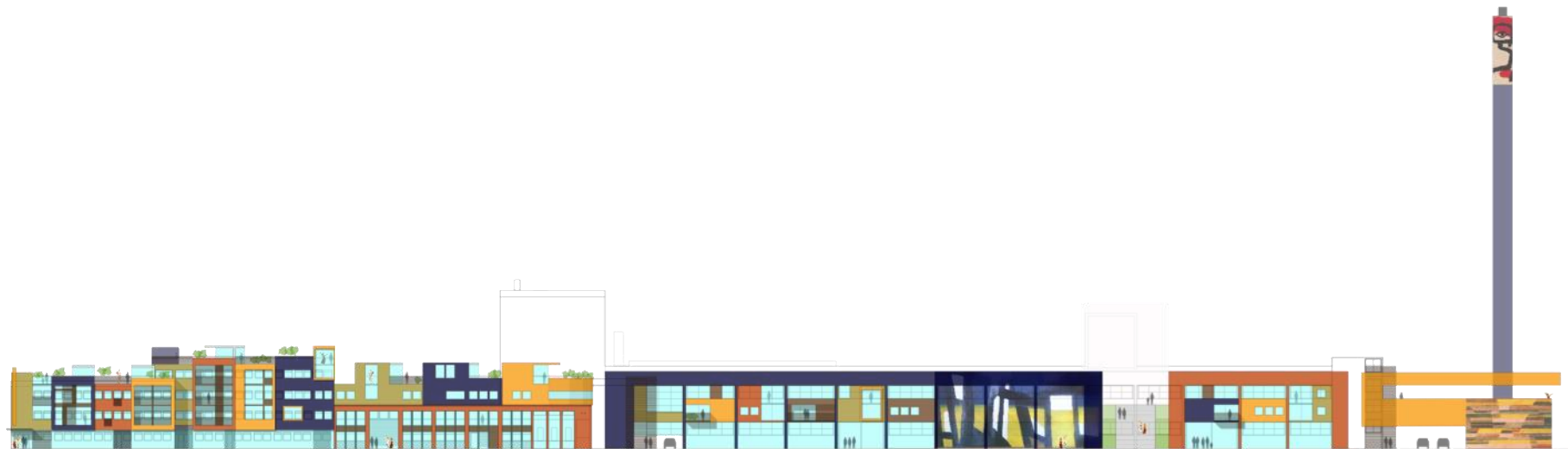




B_Dæmi um bæjarrými, yfirbragð og efnisnotkun



B_Dæmi um bæjarrými, yfirbragð og efnisnotkun



B_Dæmi um breytta ásýnd núverandi mannvirkja



B_Uppsjávarsýning...





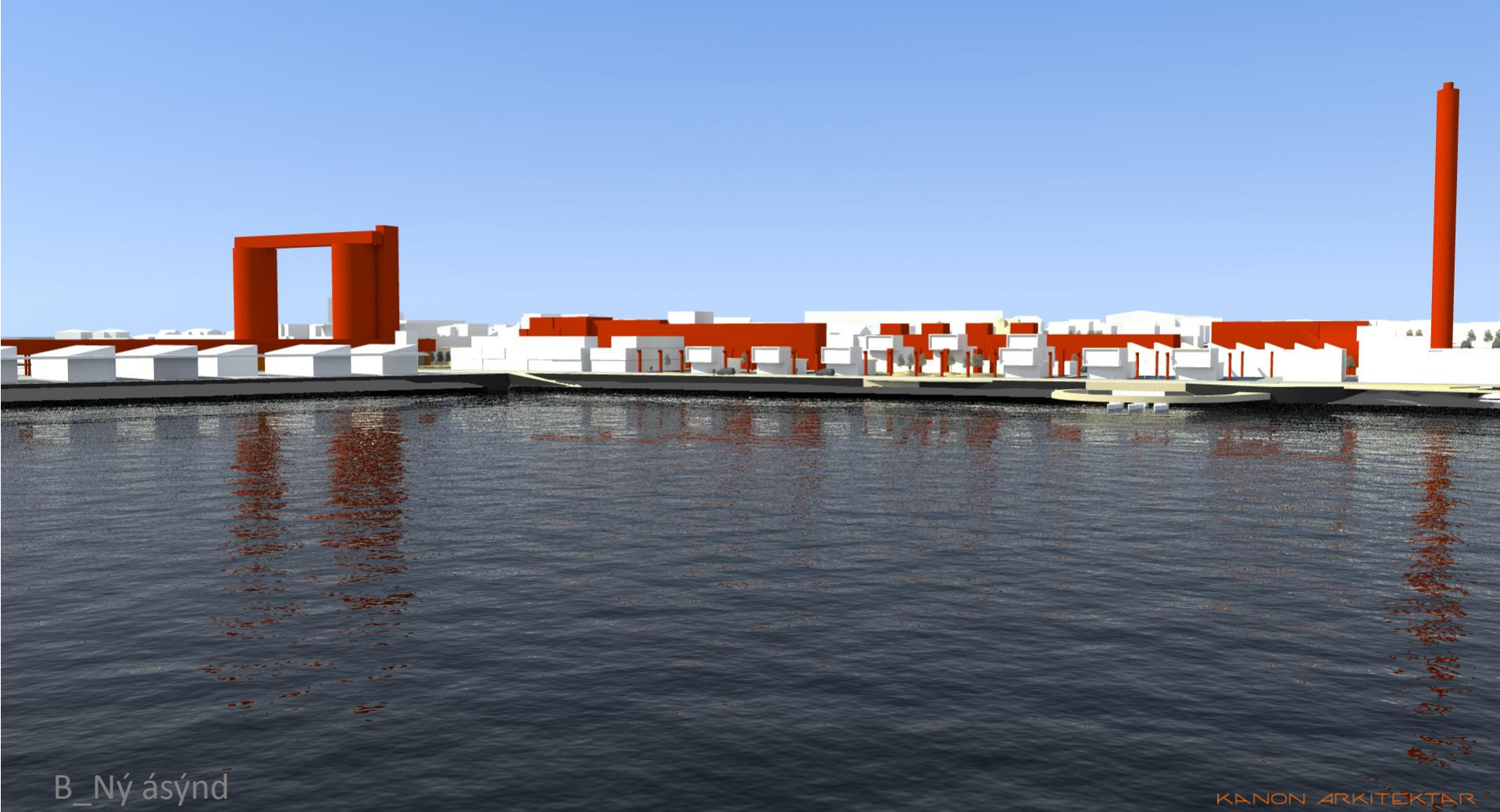
B_Hótel - hótélgarður

KANON ARHITEKTAR



B_Torgsvæði í sandgryfju

KANON ARCHITEKTAR



B_Ný ásýnd

KANON ARKITEKTAR

takk